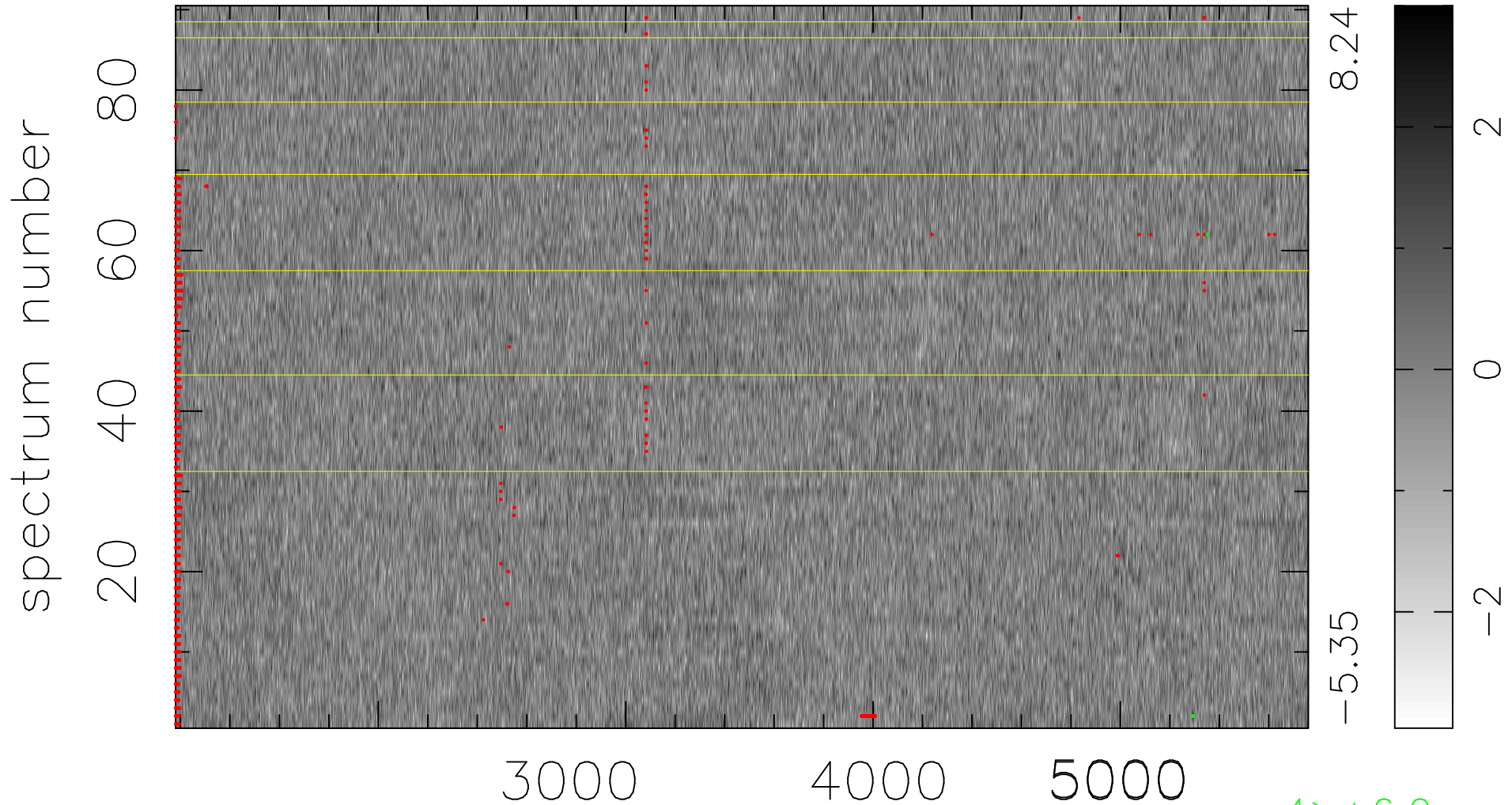


$$\chi(\lambda, t) = ( \text{Data} - \text{Model } \text{AC}_5\text{B}_3\text{F} ) / \sigma \chi$$

$$\chi^2 / (412200 - 5152) = 0.922 \Rightarrow 1.007$$

4580x90



bad:1251=0.30%  $\lambda$  (Å)  $z = 0.73082$