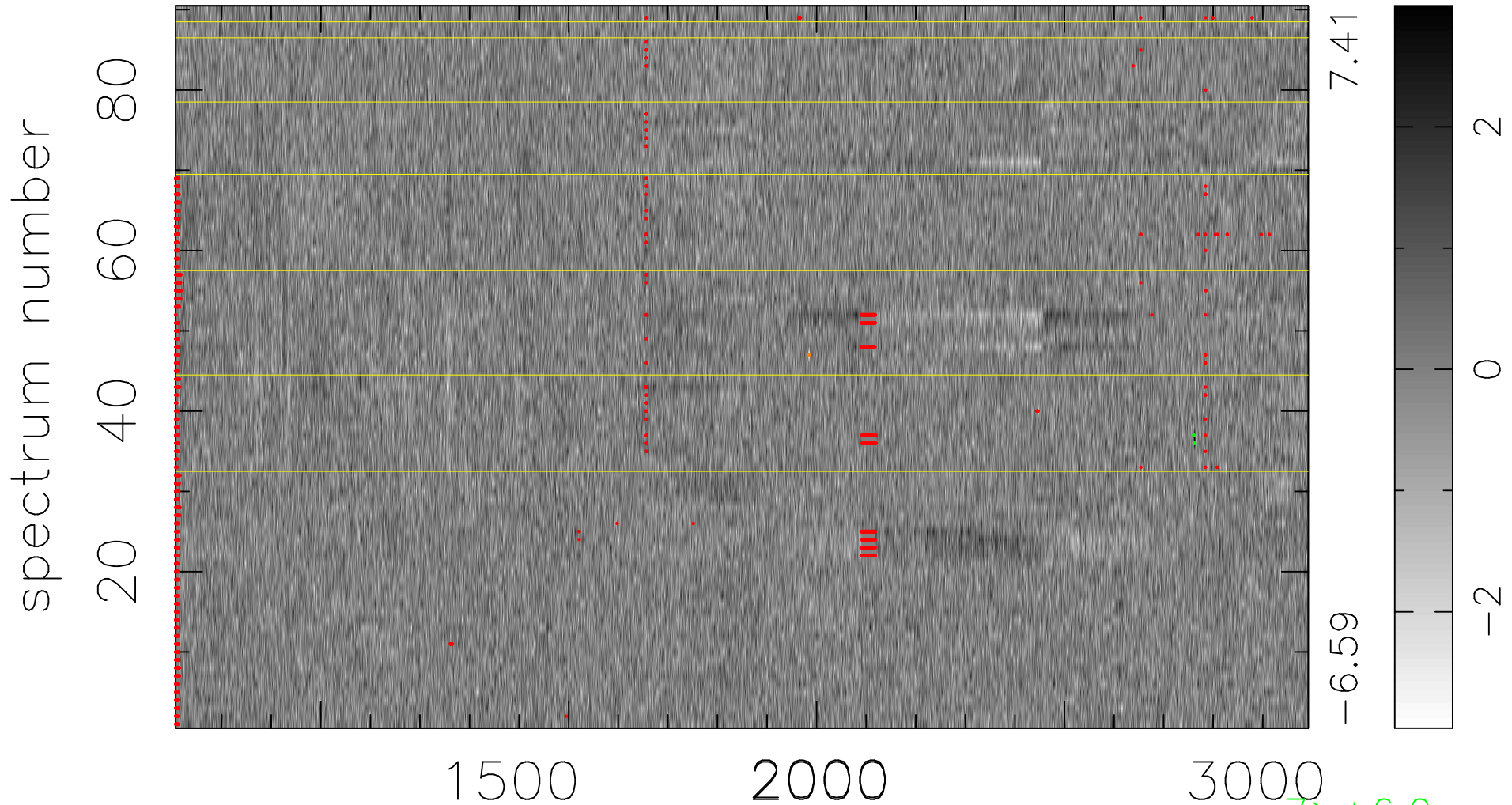


$$\chi(\lambda, t) = (\text{Data} - \text{Model } \text{AC}_5\text{B}_7\text{F}) / \sigma \chi$$

$$\chi^2 / (411300 - 5504) = 0.920 \Rightarrow 1.008$$

4570x90



bad:1533=0.37% λ (Å) $z = 2.27462$

$>+6.0\sigma$

$<-6.0\sigma$