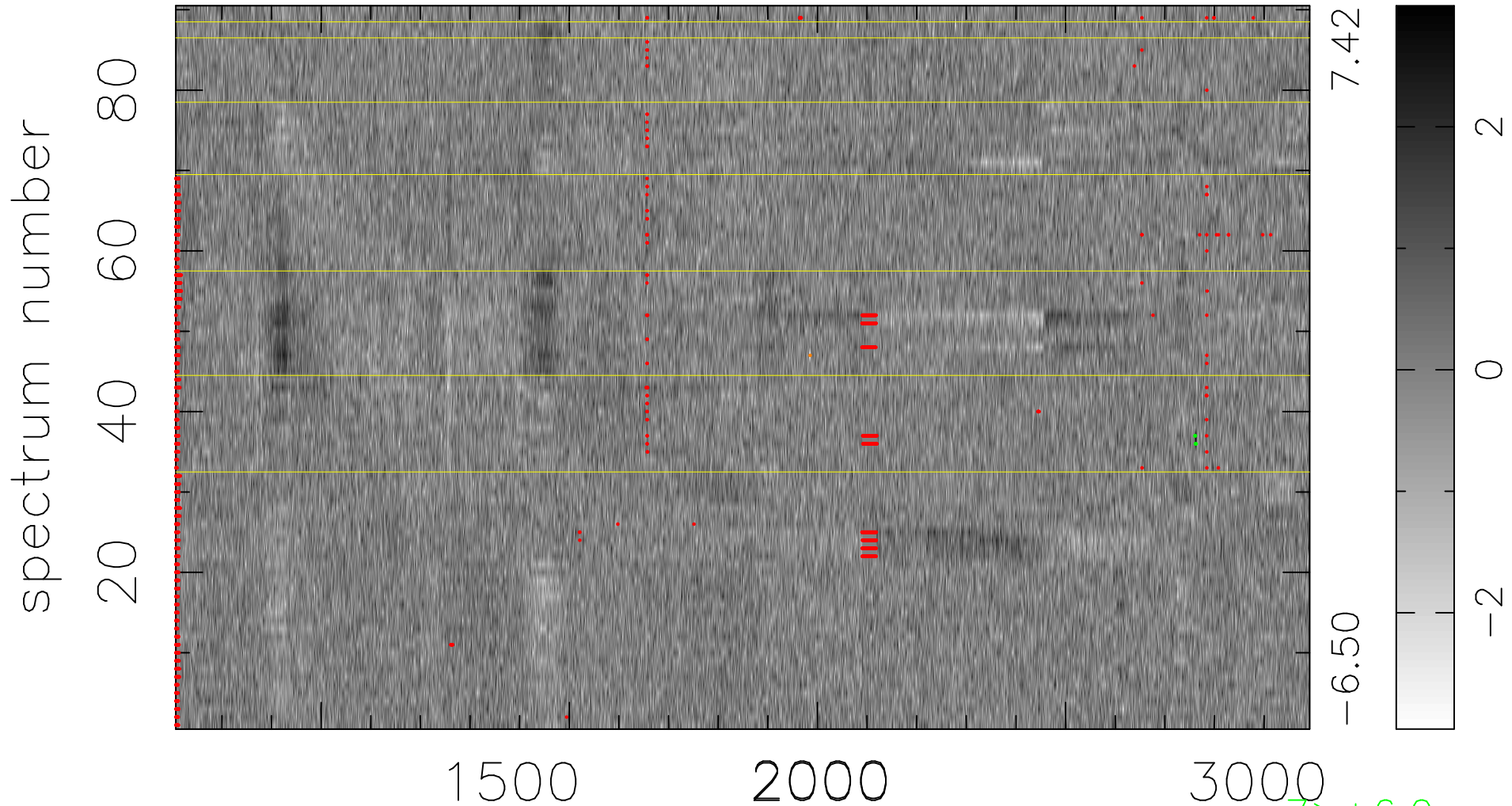


$$\chi(\lambda, t) = ( \text{Data} - \text{Model } AC_5 ) / \sigma \chi$$

$$\chi^2 / (411300 - 5240) = 0.939 \Rightarrow 1.007$$

4570x90



bad:1533=0.37%  $\lambda$  (Å)  $z = 2.27462$

7 > +6.0σ  
1 < -6.0σ