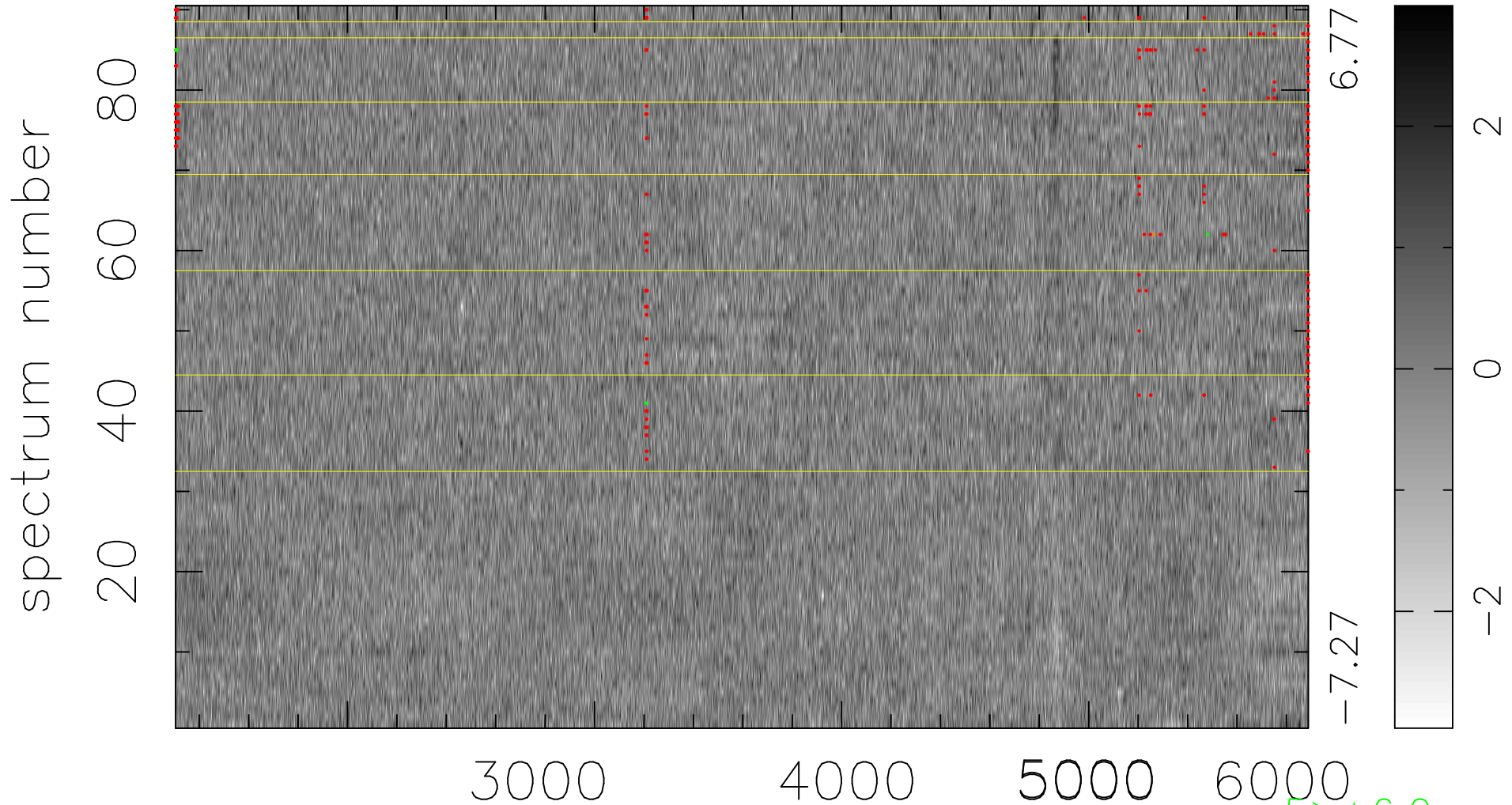


$$\chi(\lambda, t) = ( \text{Data} - \text{Model AC}_5\text{F} ) / \sigma \chi$$

$$\chi^2 / (412650 - 4968) = 0.912 \Rightarrow 1.005$$

4585x90



bad:340=0.082%  $\lambda$  (Å)  $z = 0.68057$

5 > +6.0 $\sigma$

3 < -6.0 $\sigma$