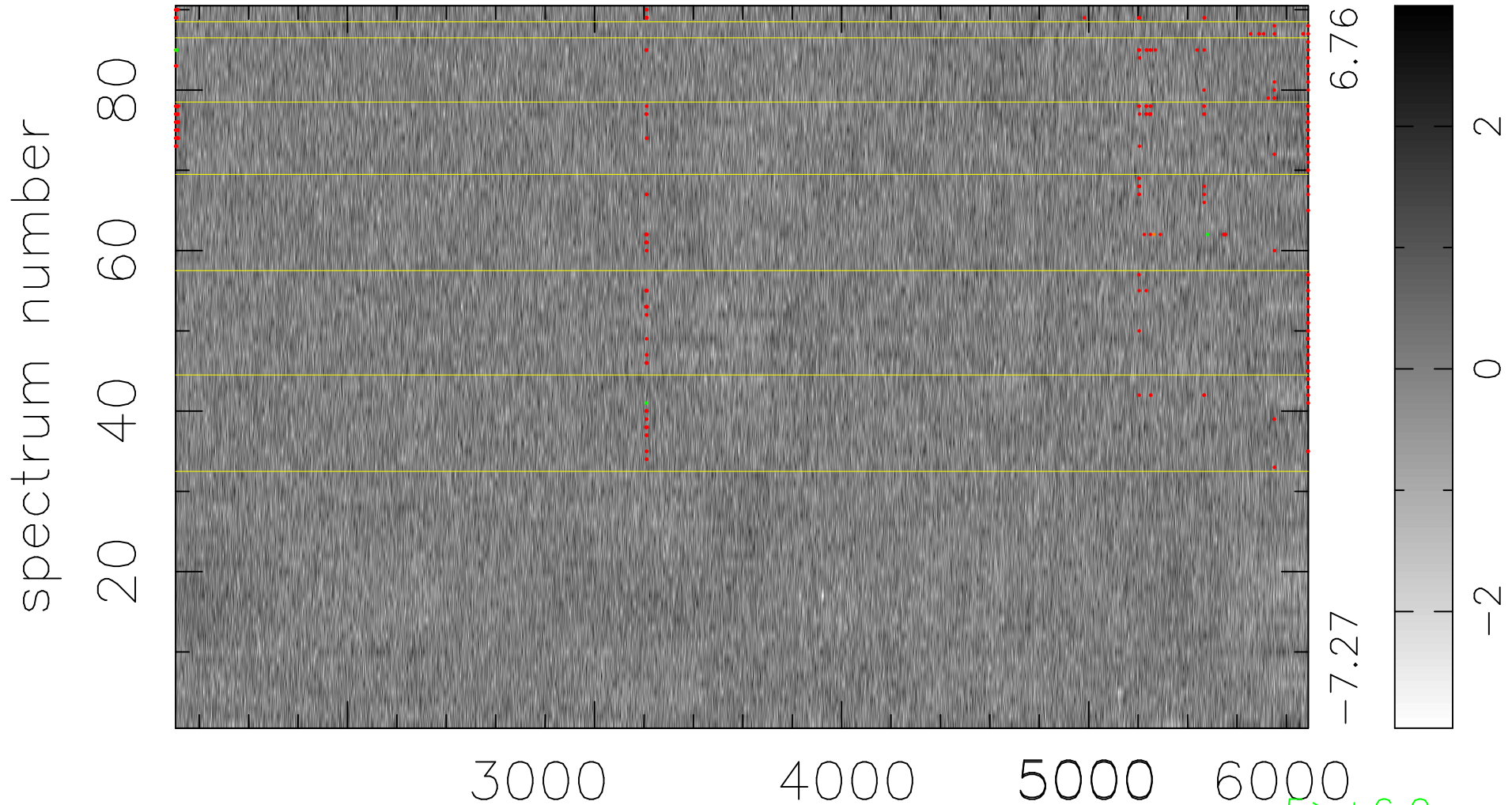


$$\chi(\lambda, t) = (\text{Data} - \text{Model } \text{AC}_5\text{B}_3\text{F}) / \sigma \chi$$

$$\chi^2 / (412650 - 5146) = 0.909 \Rightarrow 1.005$$

4585x90



bad:340=0.082%

λ (Å) $z = 0.68057$

5 > +6.0σ

3 < -6.0σ