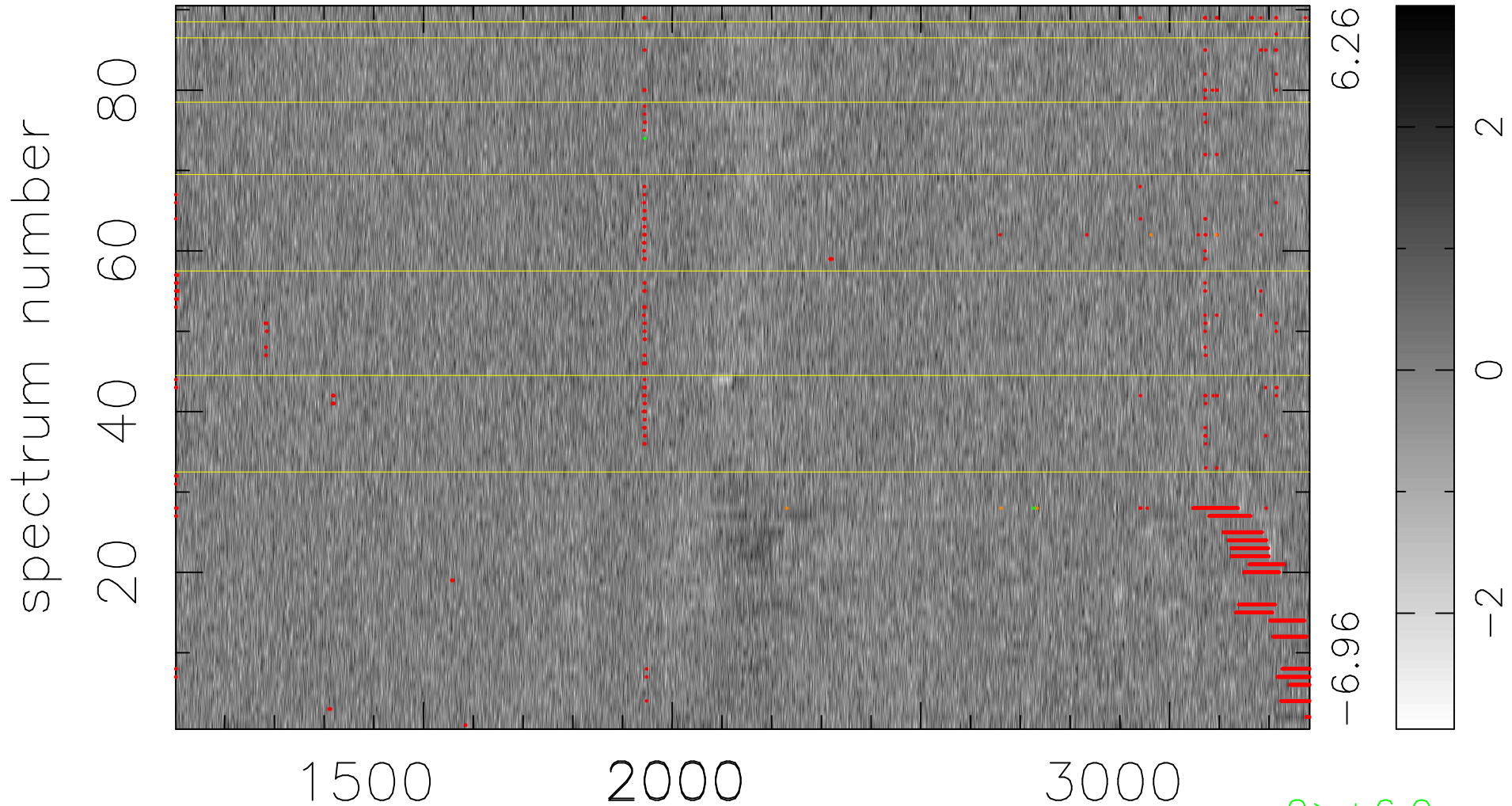


$$\chi(\lambda, t) = ( \text{Data} - \text{Model } \text{AC}_5\text{B}_5\text{F} ) / \sigma \chi$$

$$\chi^2 / (410490 - 5309) = 1.062 \Rightarrow 1.008$$

4561 × 90



bad:2582=0.63%     $\lambda$  (Å)     $z = 1.86849$

2 > +6.0σ

5 < -6.0σ