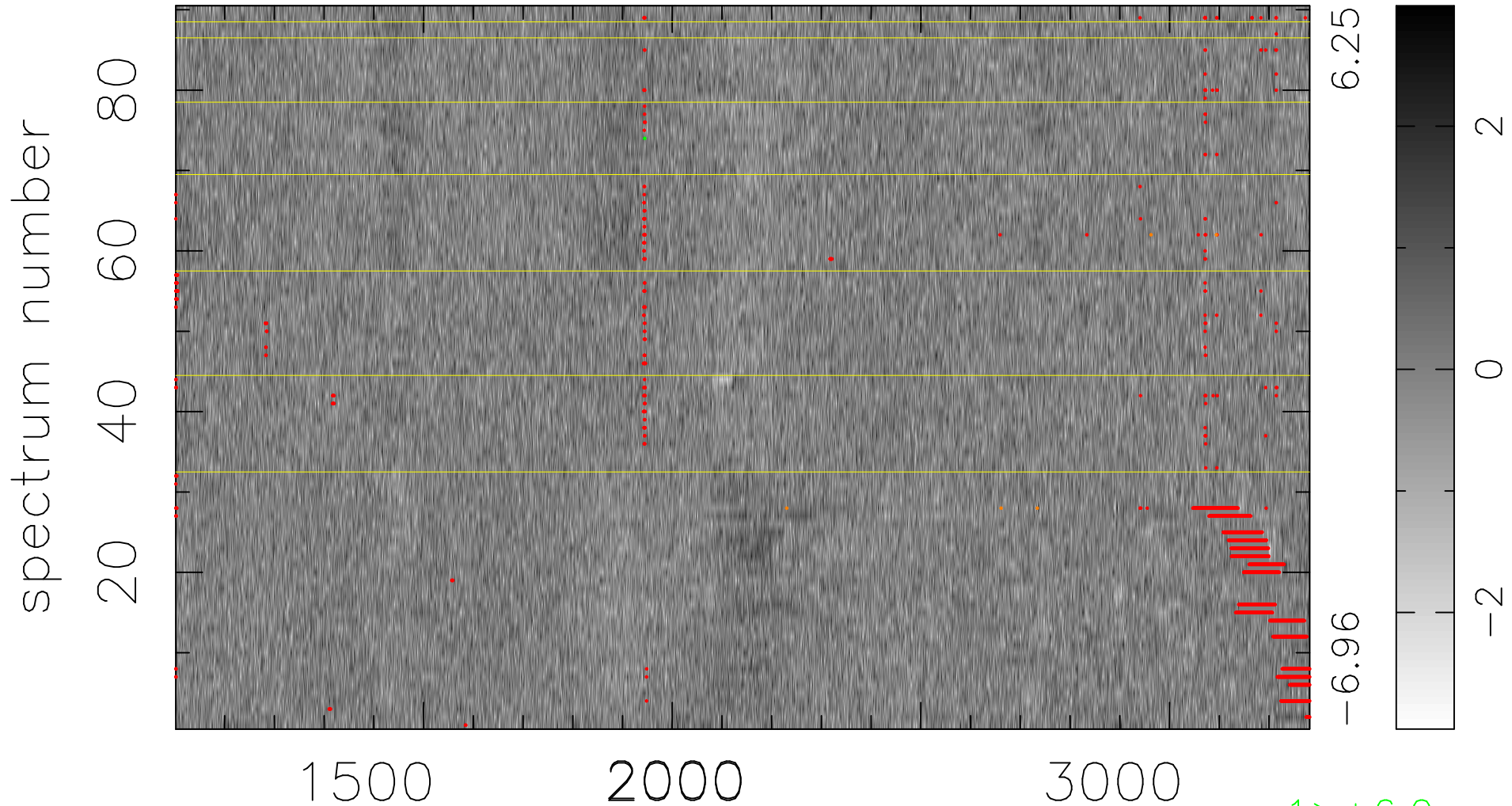


$$\chi(\lambda,t) = (\text{Data} - \text{Model } AC_5) / \sigma \chi$$

$$\chi^2 / (410490 - 5044) = 1.067 \Rightarrow 1.007$$

4561 × 90



bad:2582=0.63% λ (Å) $z = 1.86849$

1 > +6.0σ

5 < -6.0σ