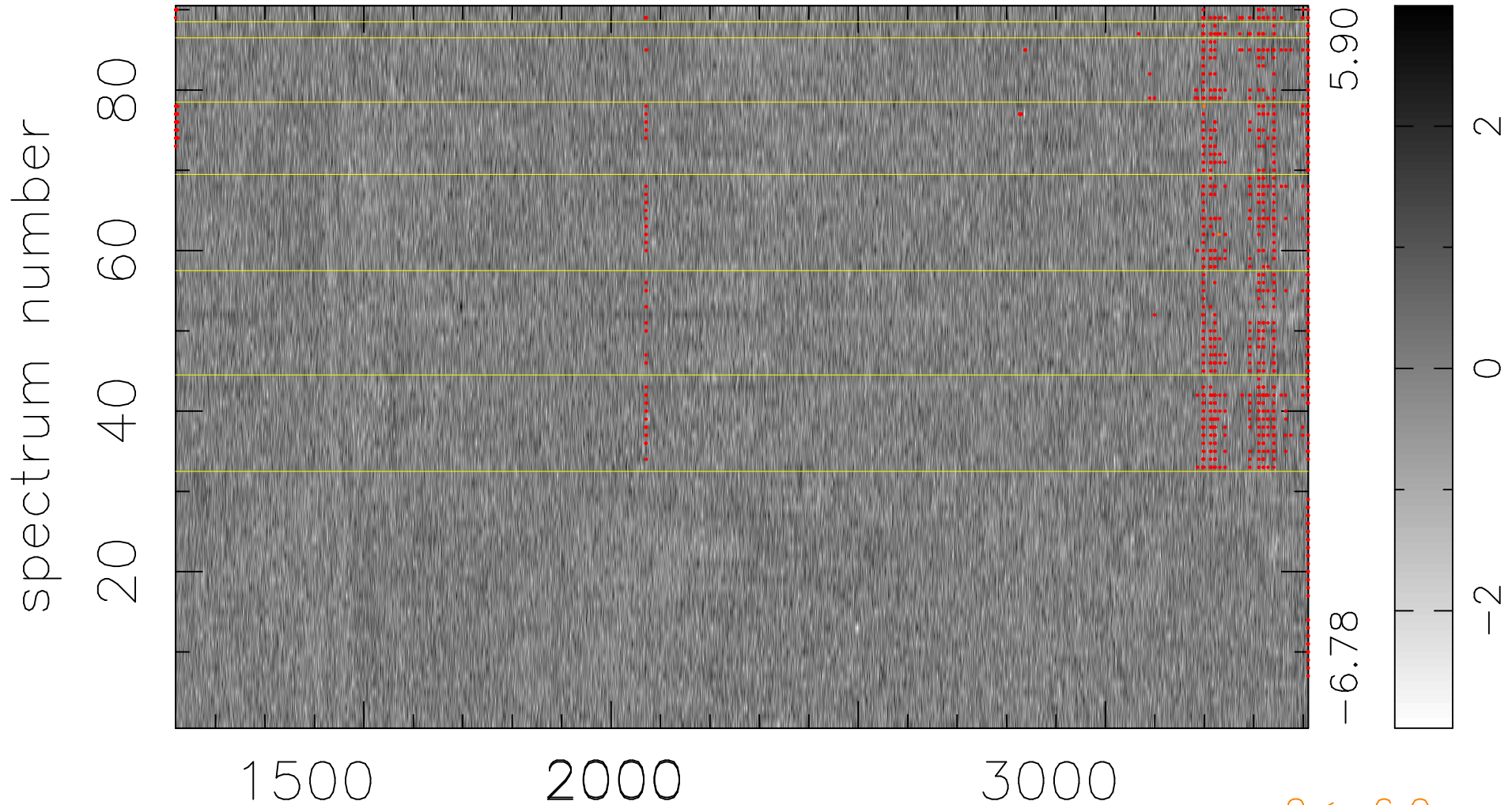


$$\chi(\lambda, t) = (\text{Data} - \text{Model } \text{AC}_5\text{B}_5\text{F}) / \sigma \chi$$

$$\chi^2 / (412470 - 5288) = 0.891 \Rightarrow 1.007$$

4583x90



bad:925=0.22%

λ (Å) $z = 1.70612$

$2 < -6.0\sigma$