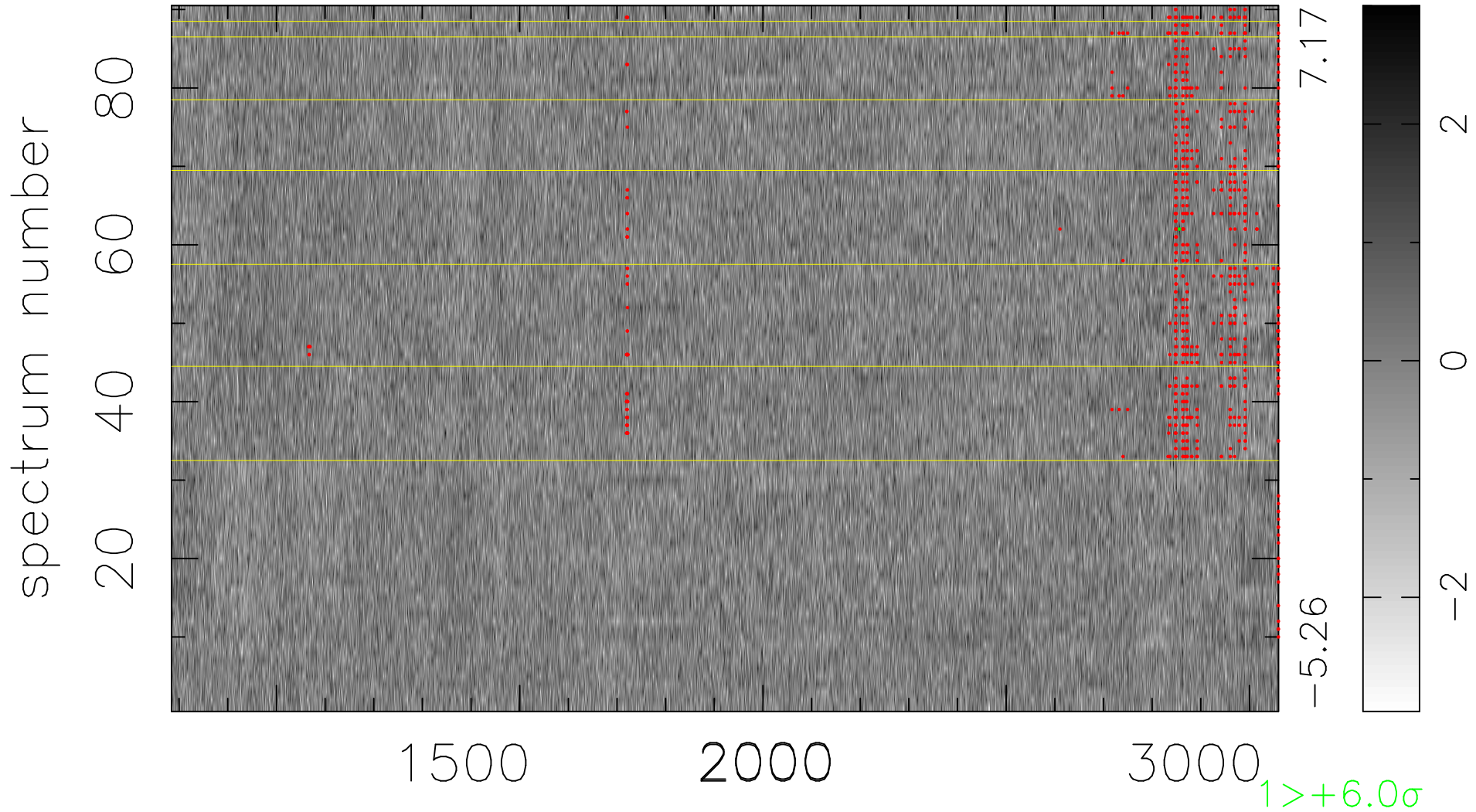


$$\chi(\lambda, t) = (\text{Data} - \text{Model } \text{AC}_5\text{B}_7\text{F}) / \sigma \chi$$

$$\chi^2 / (409590 - 5440) = 0.974 \Rightarrow 1.008$$

4551 × 90



bad:766=0.19% λ (Å) $z = 2.17898$