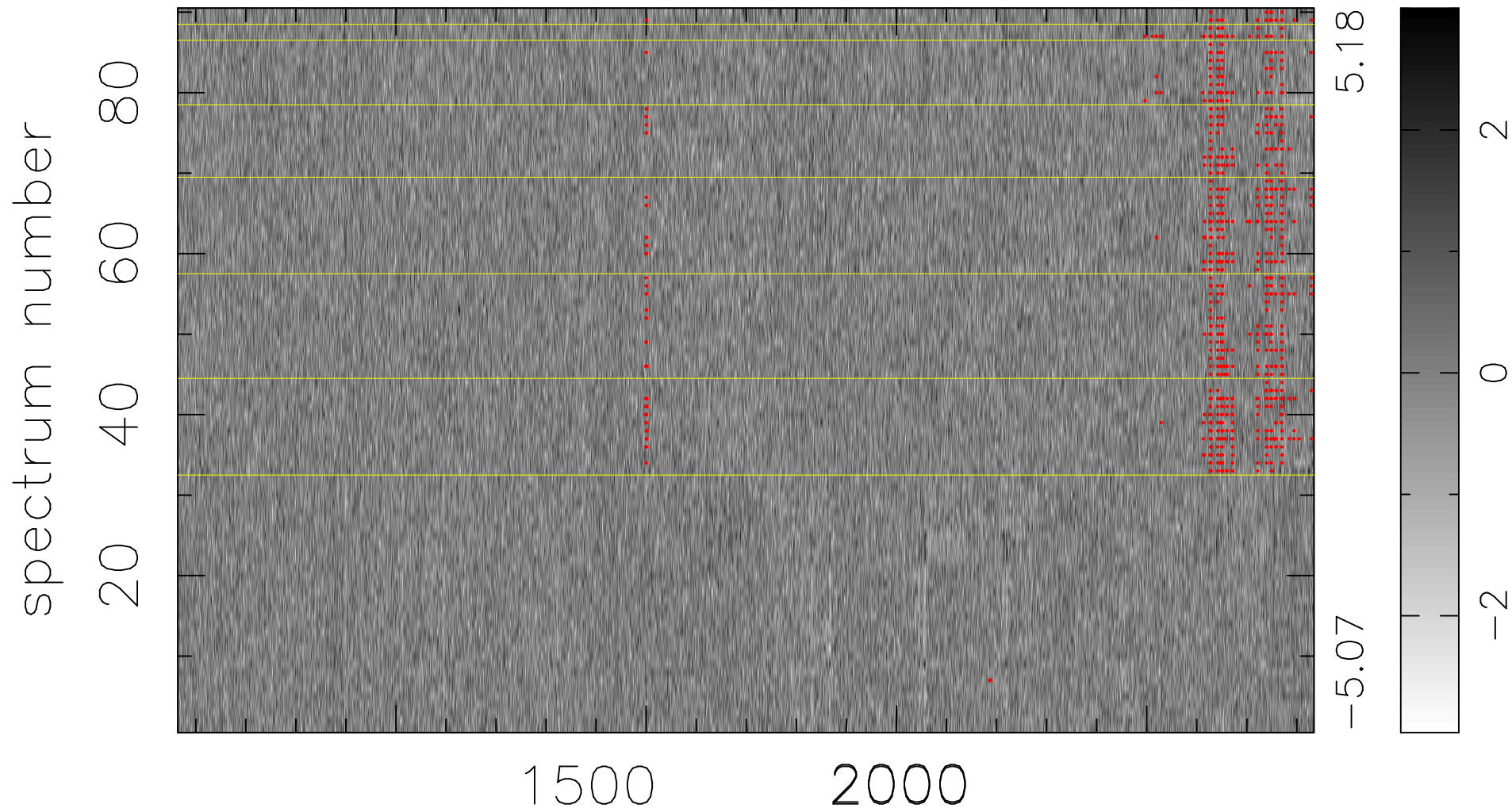


$$\chi(\lambda, t) = (\text{Data} - \text{Model } \text{AC}_5\text{B}_7\text{F}) / \sigma \chi$$

$$\chi^2 / (408690 - 5443) = 0.927 \Rightarrow 1.008$$

4541 × 90



bad:762=0.19%

λ (Å) $z = 2.51945$