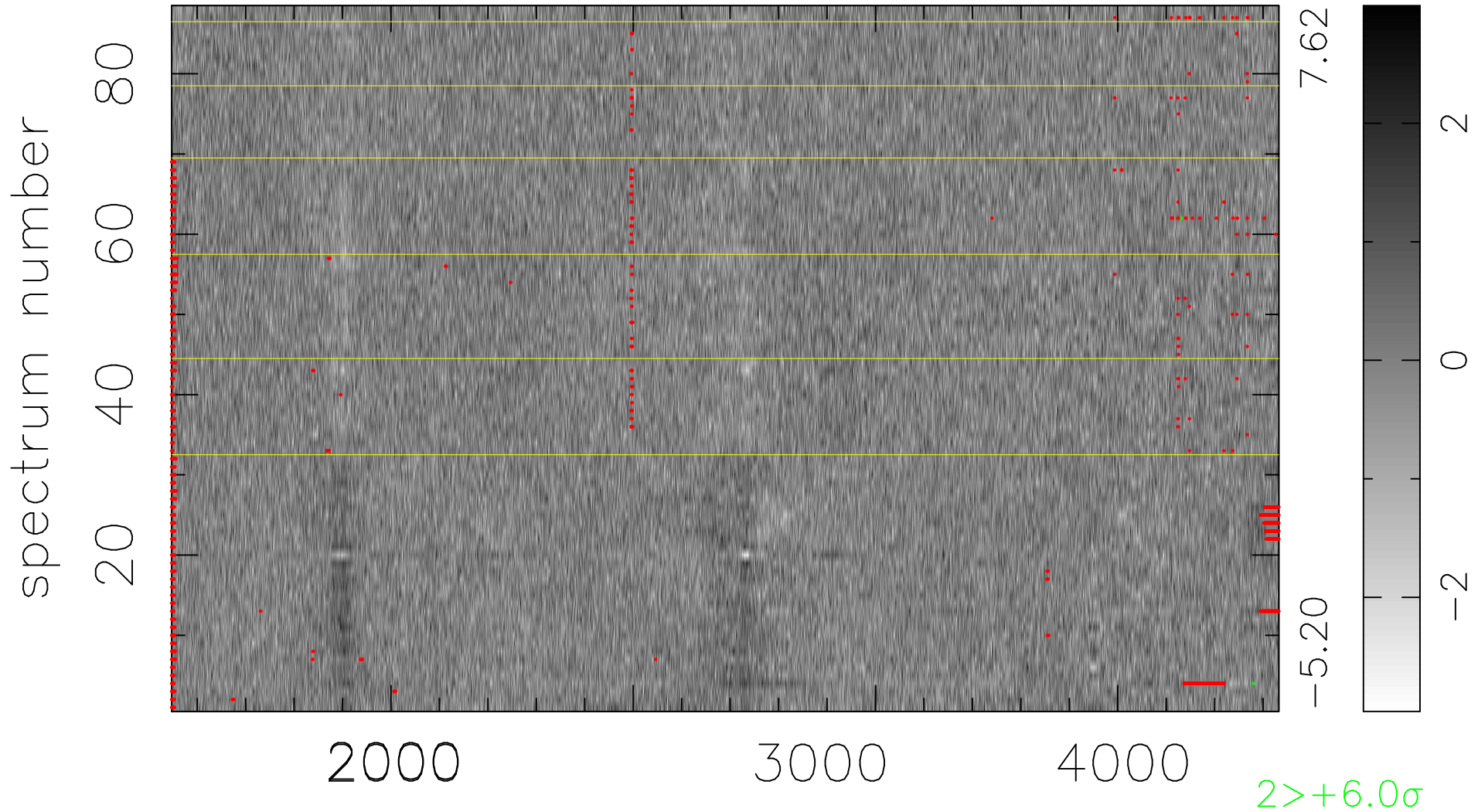


$$\chi(\lambda, t) = ( \text{Data} - \text{Model AC}_5\text{F} ) / \sigma \chi$$

$$\chi^2 / (402248 - 4940) = 1.029 \Rightarrow 1.007$$

4571 × 88



bad:1724=0.43%  $\lambda$  (Å)  $z = 1.22393$