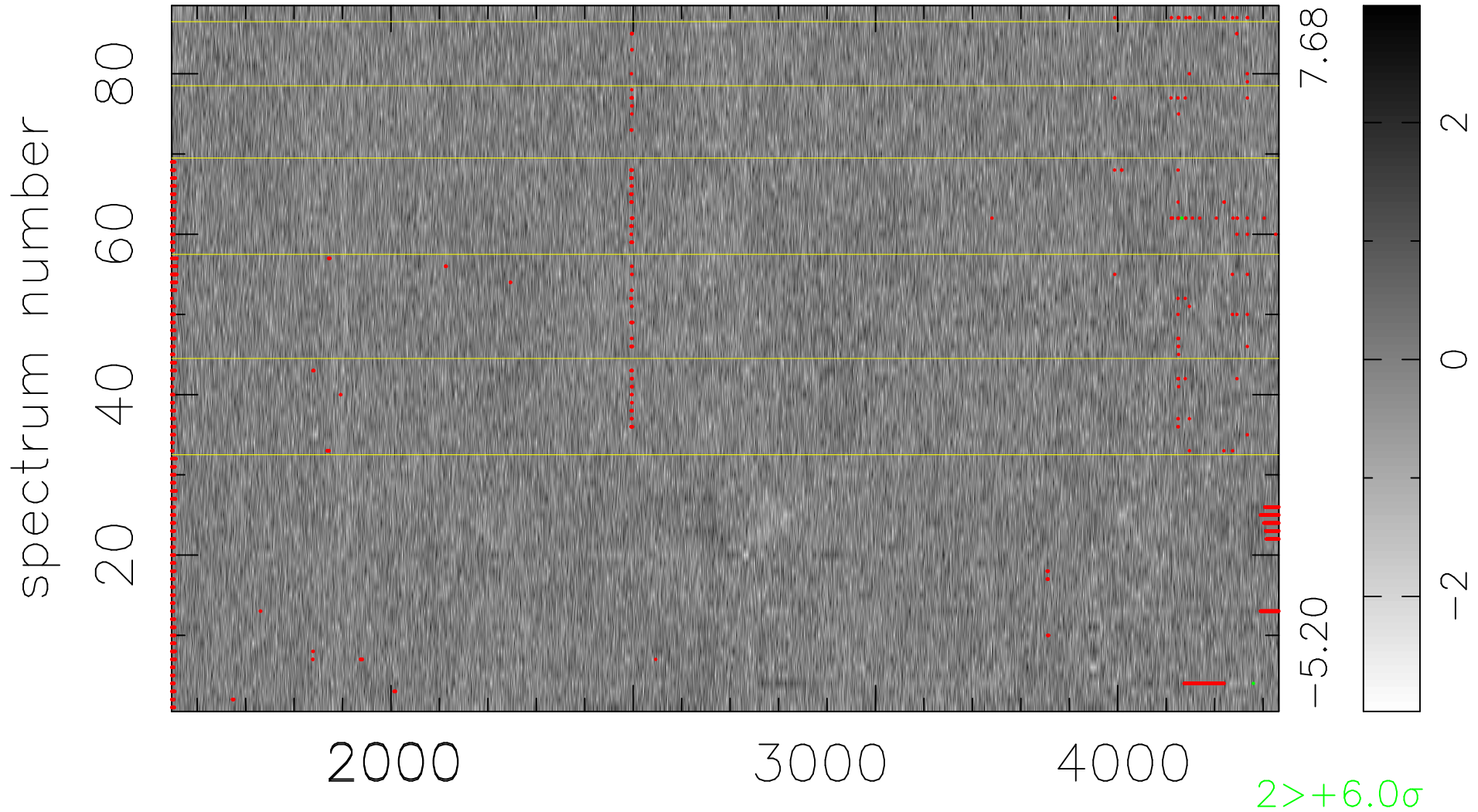


$$\chi(\lambda, t) = (\text{Data} - \text{Model } \text{AC}_5\text{B}_3\text{F}) / \sigma \chi$$

$$\chi^2 / (402248 - 5113) = 1.018 \Rightarrow 1.007$$

4571 × 88



bad:1724=0.43% λ (Å) $z = 1.22393$