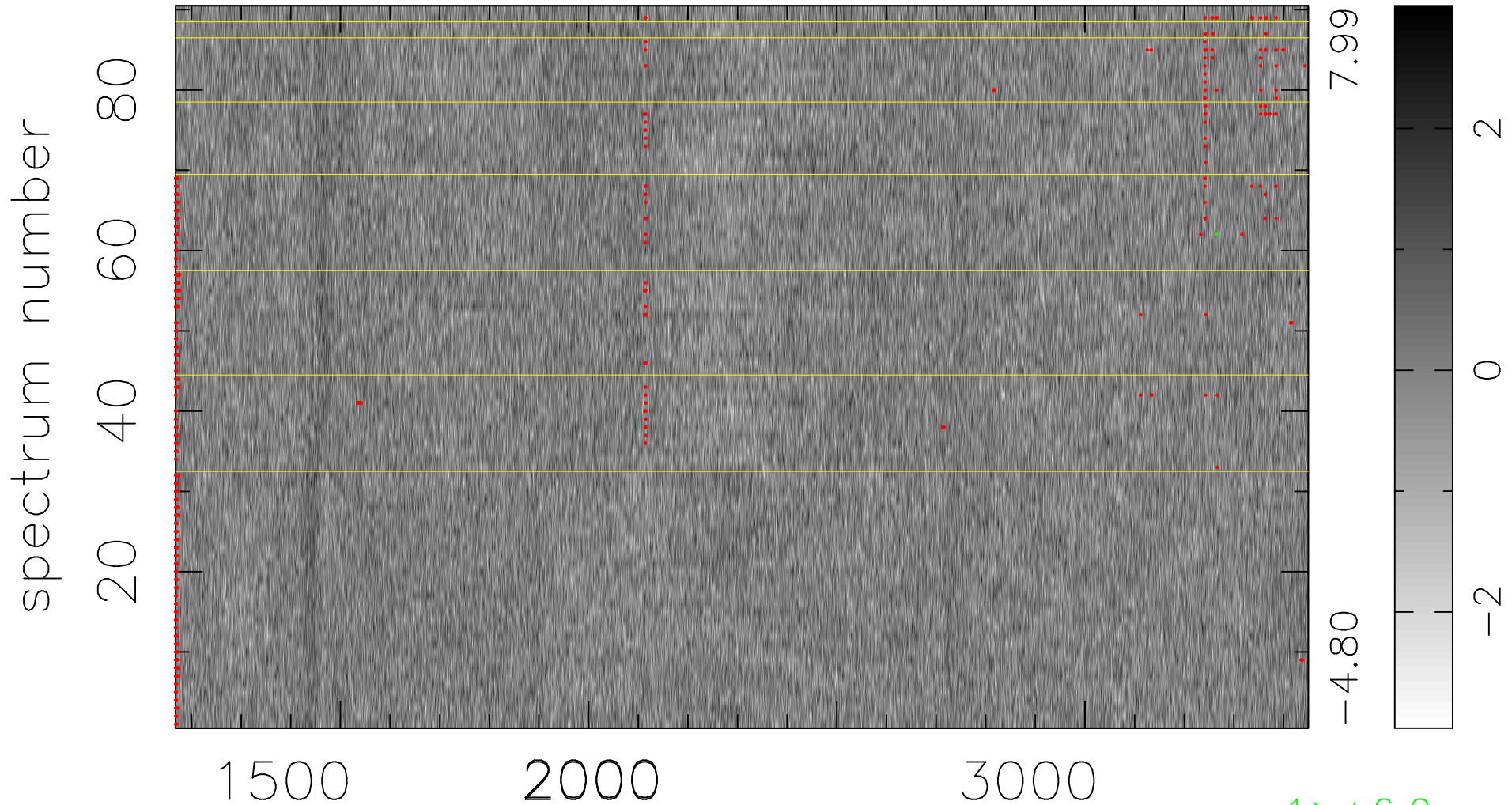


$$\chi(\lambda, t) = (\text{Data} - \text{Model } \text{AC}_5\text{B}_5\text{F}) / \sigma \chi$$

$$\chi^2 / (410850 - 5230) = 0.877 \Rightarrow 1.010$$

4565x90



bad:657=0.16%

λ (Å) $z = 1.65234$