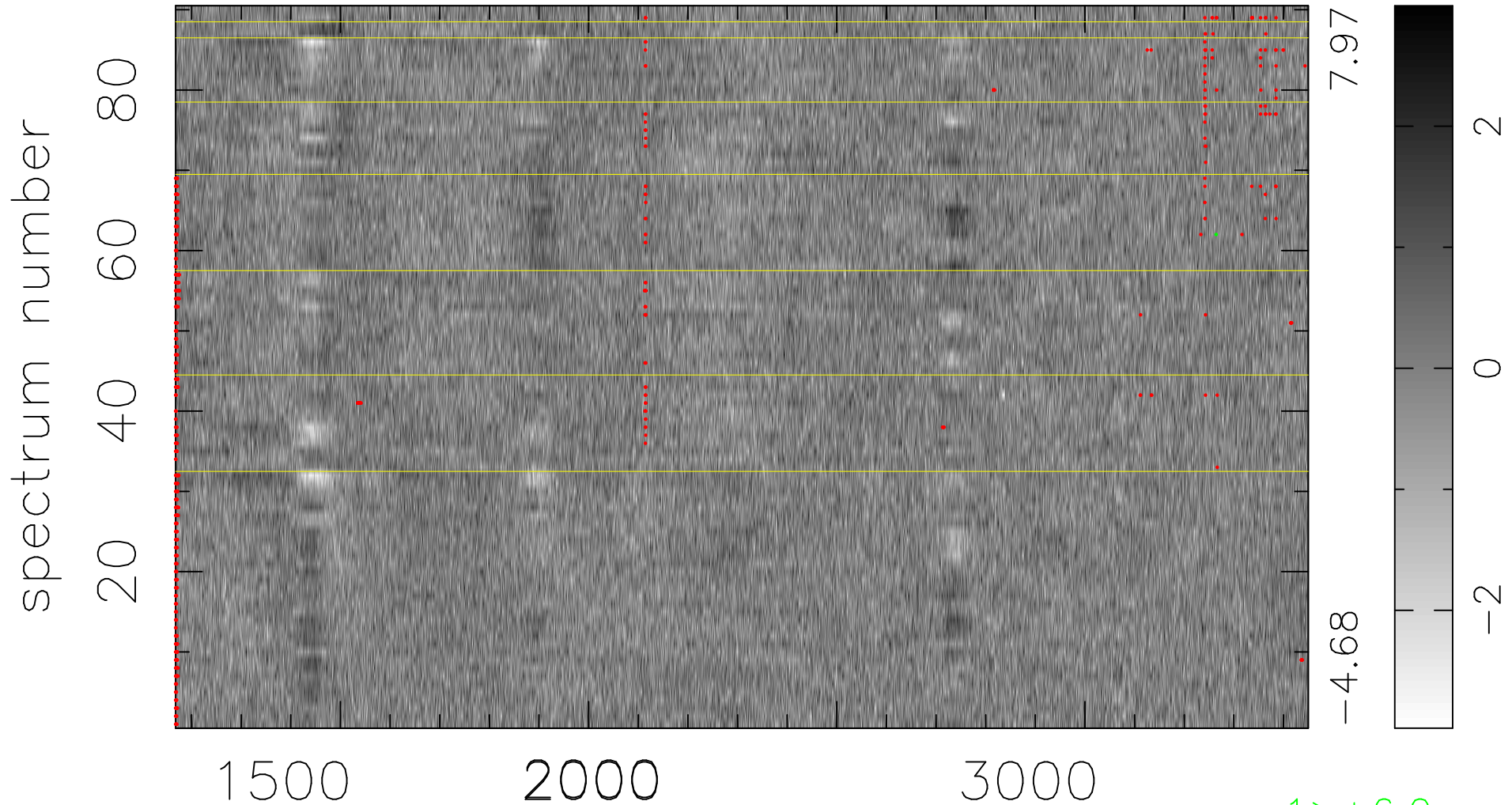


$$\chi(\lambda, t) = ( \text{Data} - \text{Model AC}_5\text{F} ) / \sigma \chi$$

$$\chi^2 / (410850 - 5137) = 0.914 \Rightarrow 1.008$$

4565x90



bad:657=0.16%

$\lambda$  (Å)  $z = 1.65234$

1 > +6.0 $\sigma$