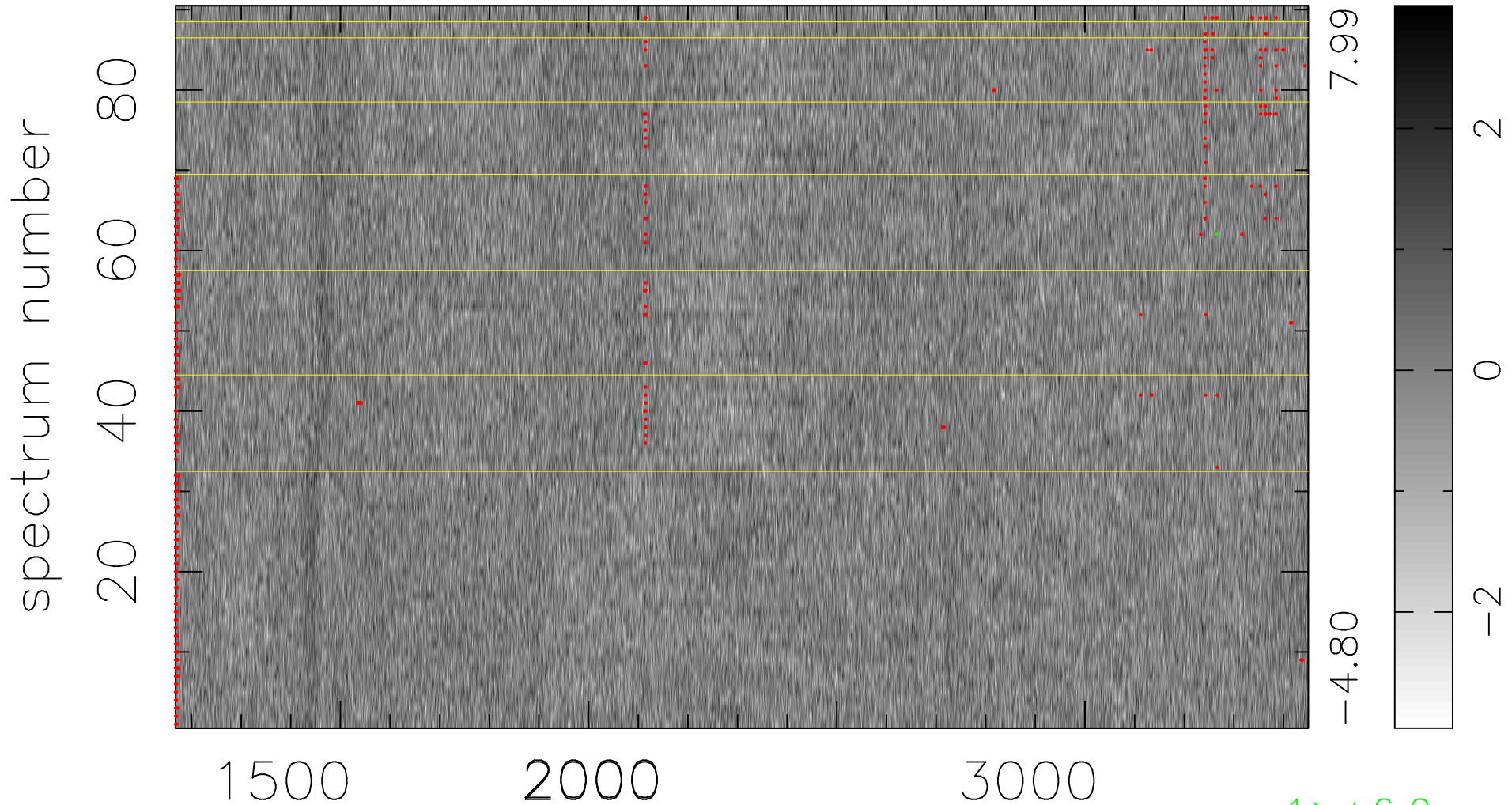


$$\chi(\lambda, t) = (\text{Data} - \text{Model } AC_5B_5F) / \sigma \chi$$

$$\chi^2 / (410850 - 5230) = 0.877 \Rightarrow 1.010$$

4565x90



7.99

-4.80

2

0

-2

1 > +6.0σ

bad:657=0.16%

λ (Å) z = 1.65234