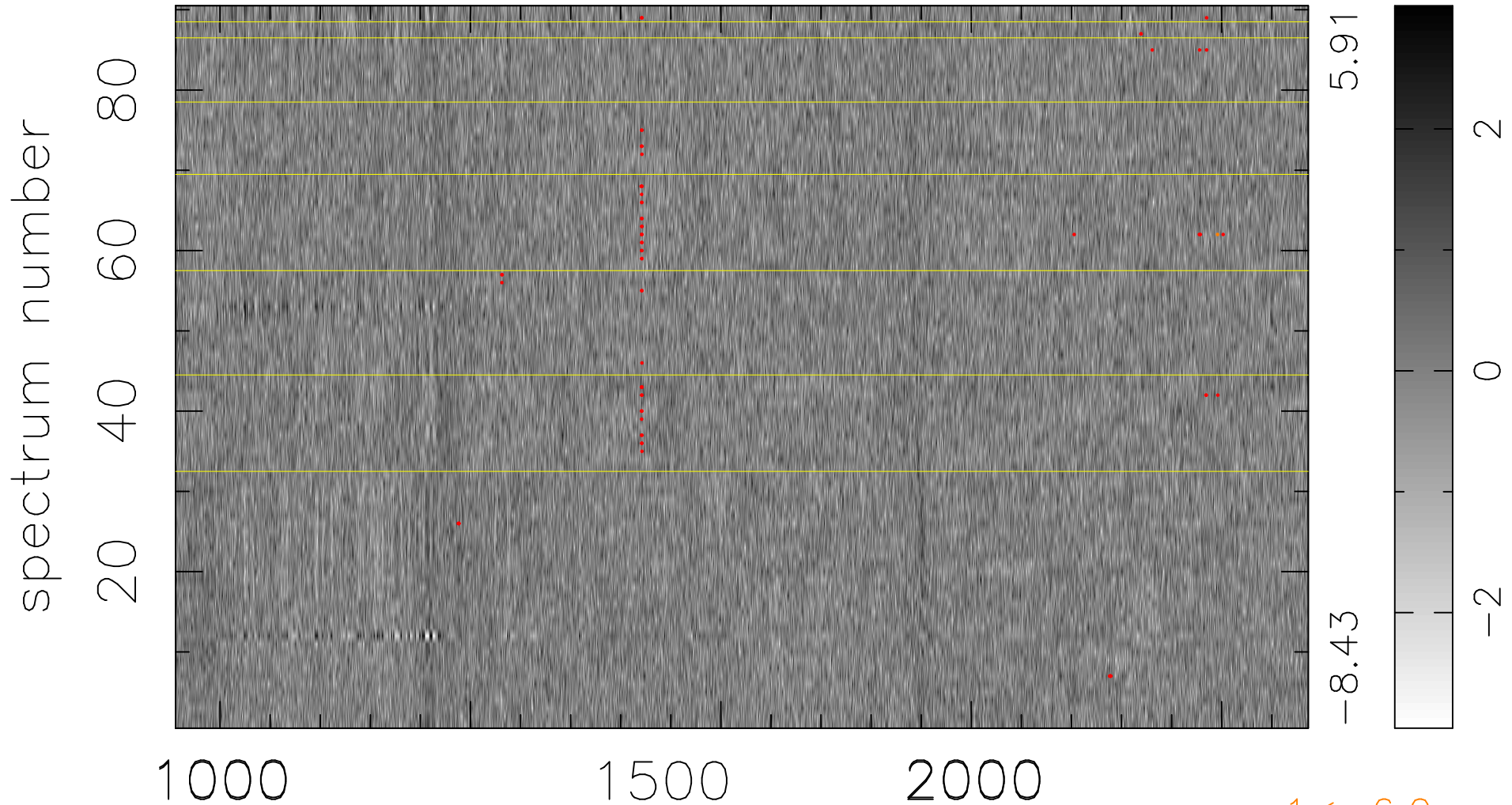


$$\chi(\lambda, t) = (\text{Data} - \text{Model } \text{AC}_5\text{B}_6\text{F}) / \sigma \chi$$

$$\chi^2 / (407160 - 5333) = 0.985 \Rightarrow 1.009$$

4524x90



1 < -6.0σ

bad:70=0.017%

λ (Å) z = 2.78564