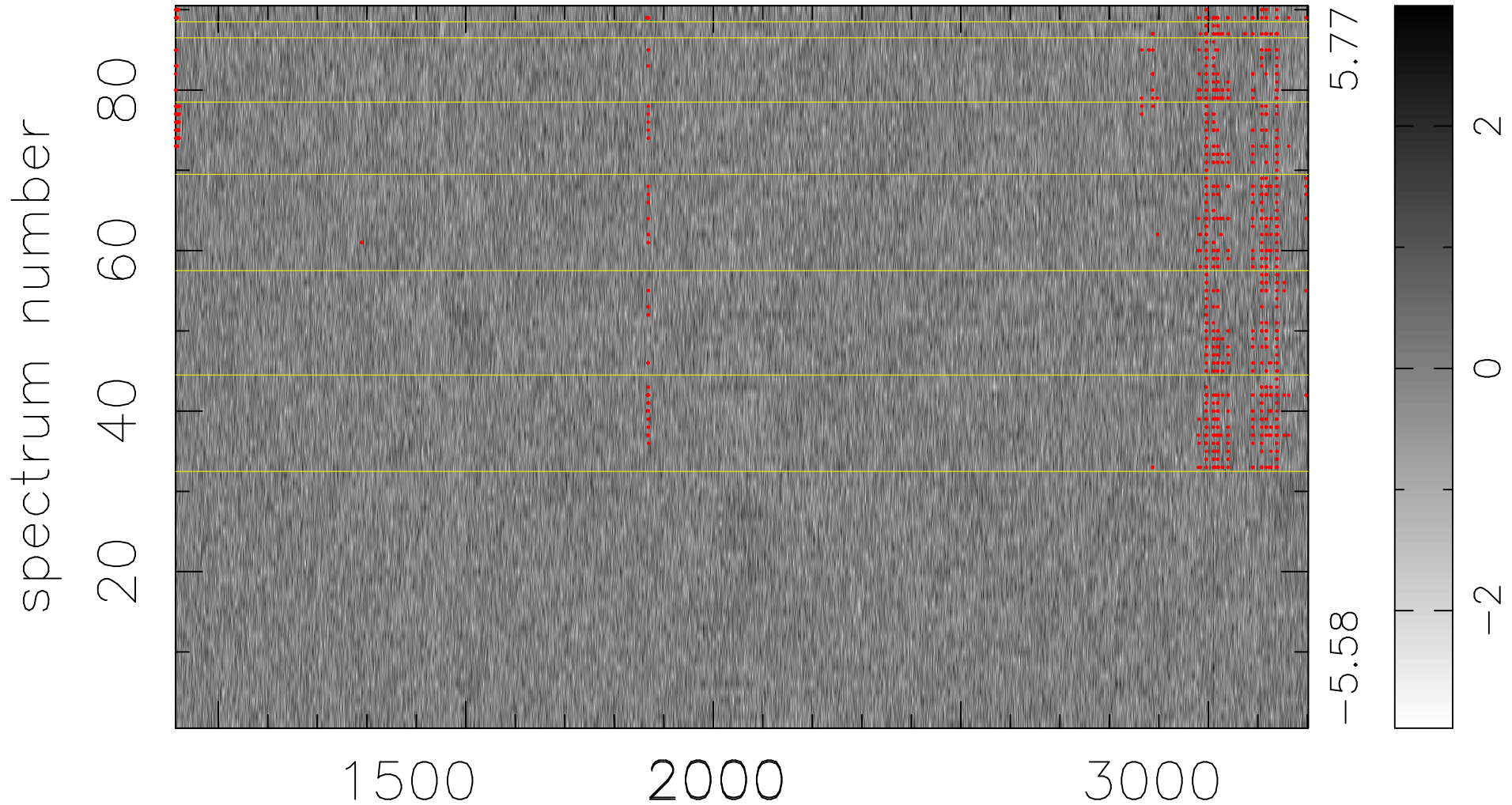


$$\chi(\lambda, t) = (\text{Data} - \text{Model } \text{AC}_5\text{B}_7\text{F}) / \sigma \chi$$

$$\chi^2 / (411930 - 5477) = 0.918 \Rightarrow 1.008$$

4577 × 90



bad:813=0.20% λ (Å) $z = 1.97059$