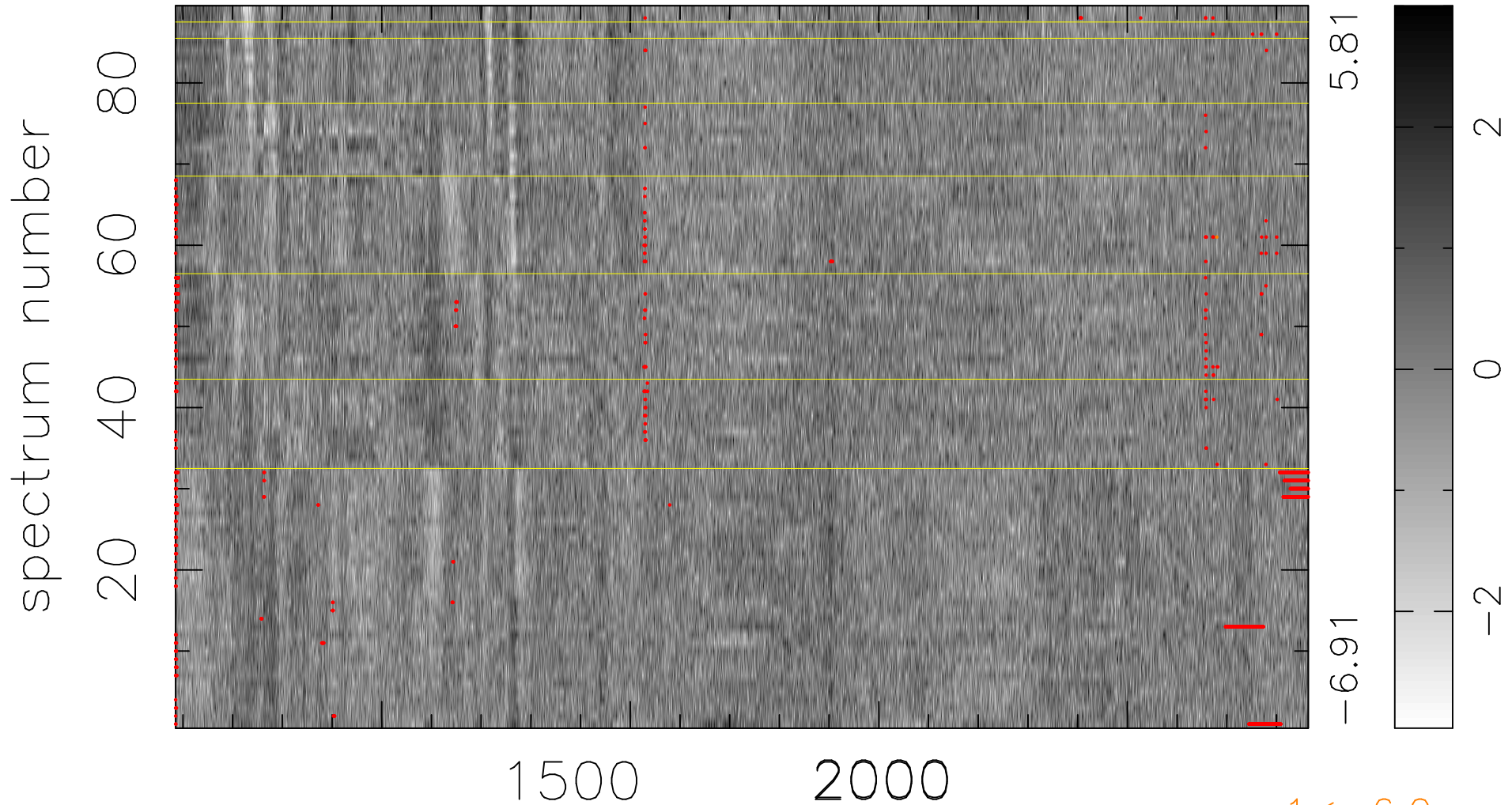


$$\chi(\lambda, t) = (\text{Data} - \text{Model } \text{AC}_5\text{B}_7\text{F}) / \sigma \chi$$

$$\chi^2 / (405662 - 5481) = 1.043 \Rightarrow 1.009$$

4558x89



bad:1102=0.27% λ (Å) $z = 2.47155$