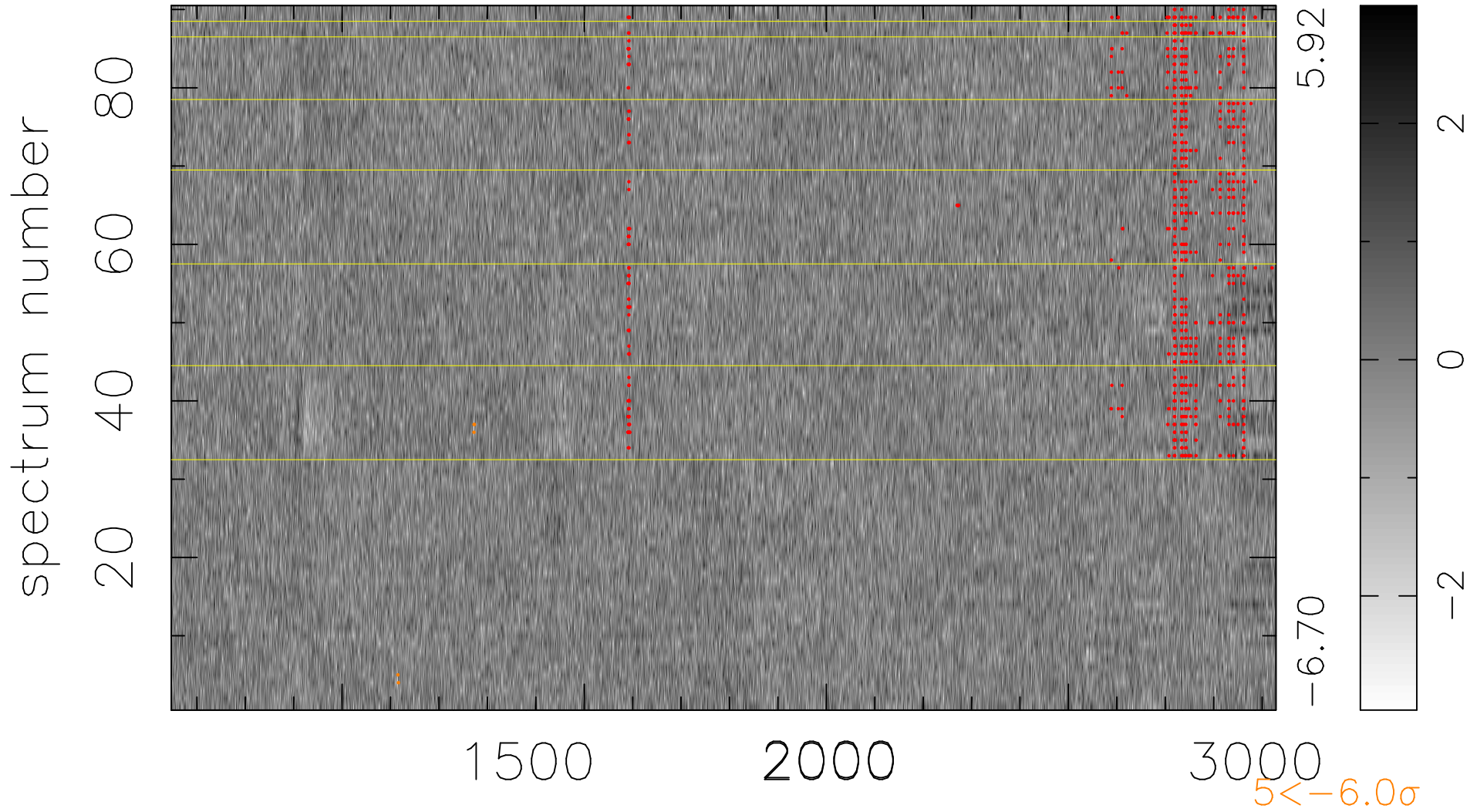


$$\chi(\lambda,t) = ( \text{Data} - \text{Model } AC_5 ) / \sigma \chi$$

$$\chi^2 / (410760 - 5232) = 1.036 \Rightarrow 1.007$$

4564x90



bad:751=0.18%

$\lambda$  (Å)  $z = 2.37351$

$5 < -6.0\sigma$