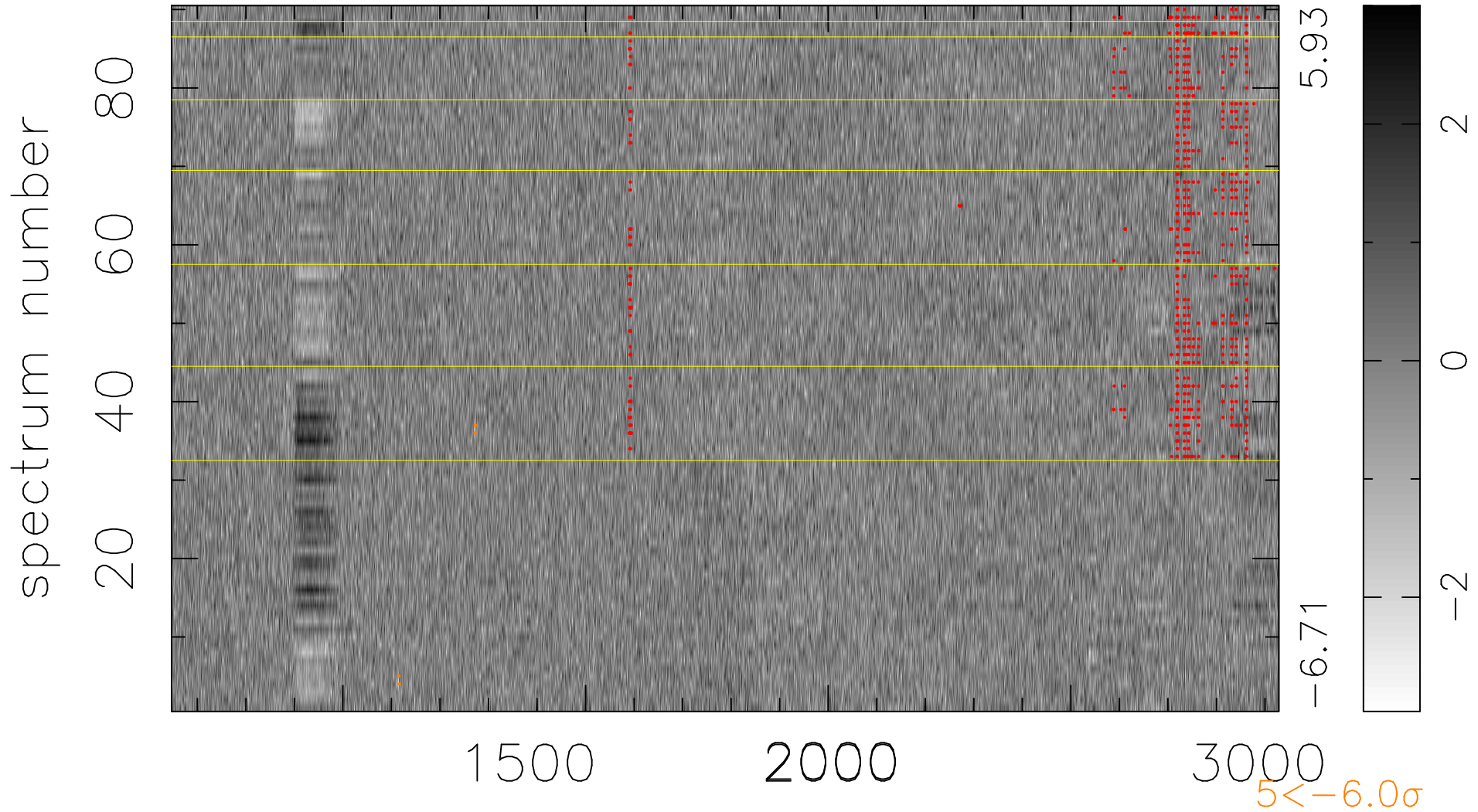


$$\chi(\lambda, t) = (\text{Data} - \text{Model } \text{AC}_5\text{B}_7\text{F}) / \sigma \chi$$

$$\chi^2 / (410760 - 5412) = 1.085 \Rightarrow 1.008$$

4564x90



bad:751=0.18%

λ (Å) $z = 2.37351$