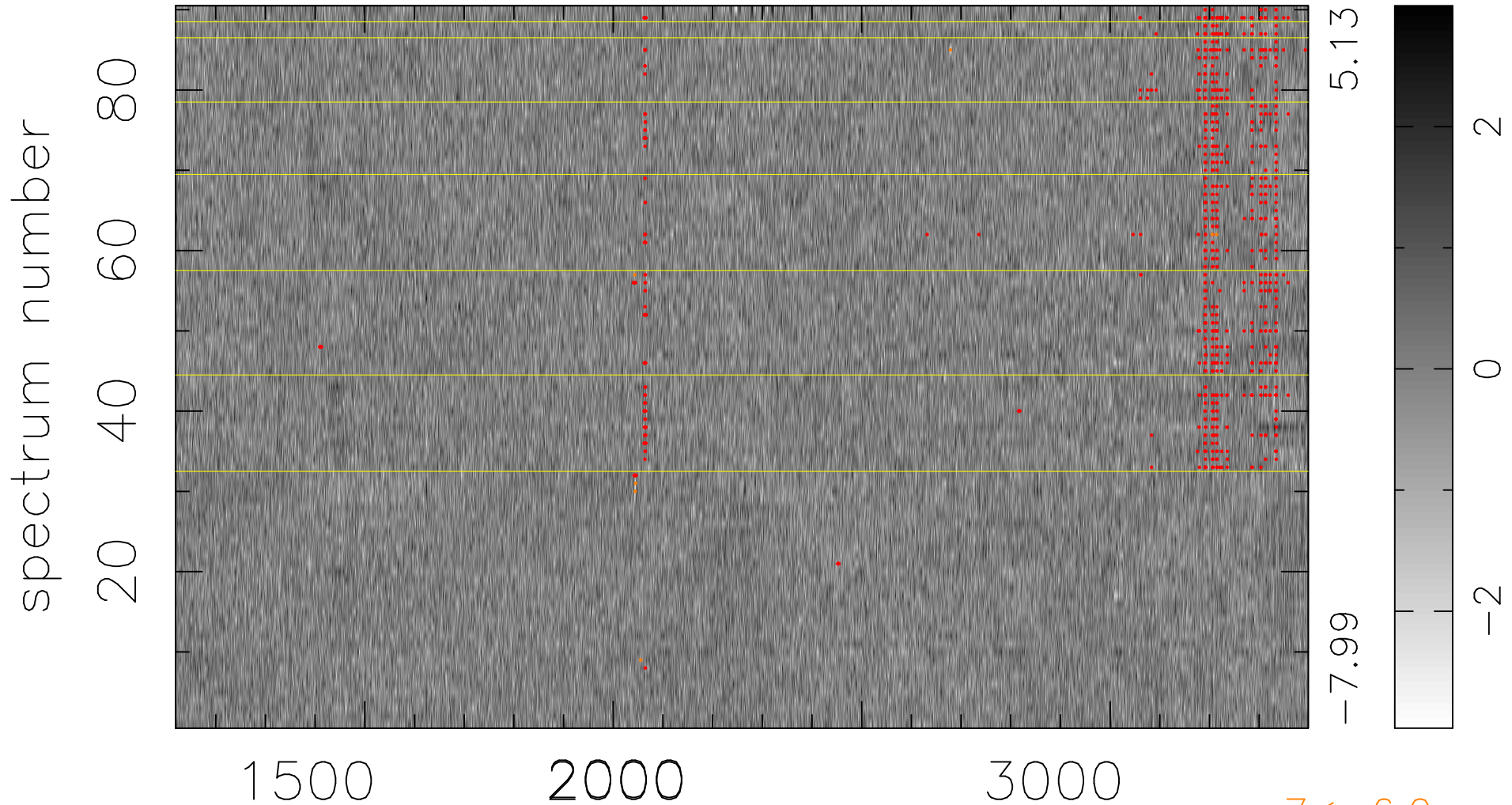


$$\chi(\lambda, t) = (\text{Data} - \text{Model AC}_5\text{F}) / \sigma \chi$$

$$\chi^2 / (410400 - 5127) = 1.015 \Rightarrow 1.007$$

4560x90



$7 < -6.0\sigma$

bad:789=0.19%

λ (Å) $z = 1.71424$