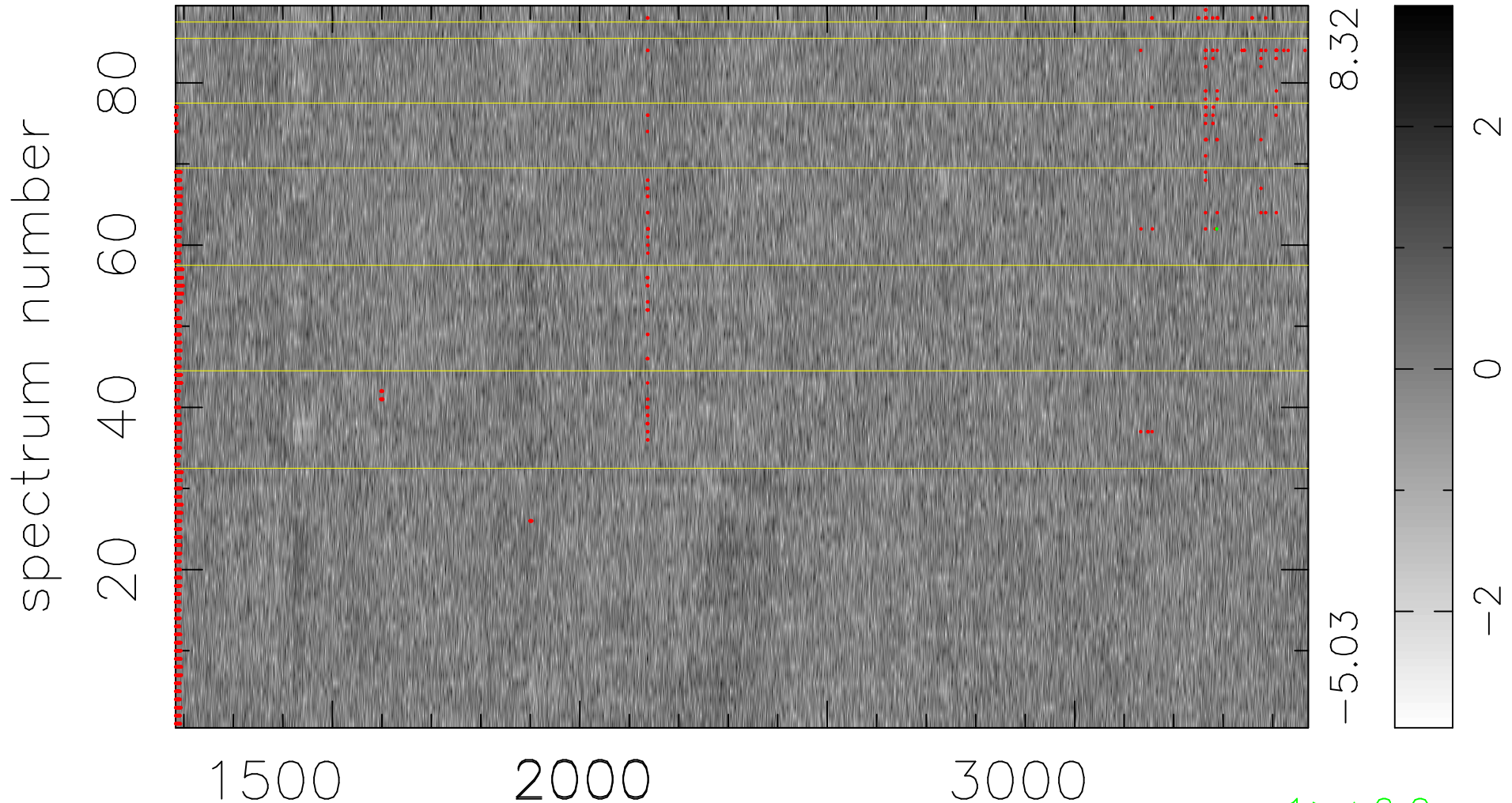


$$\chi(\lambda, t) = (\text{Data} - \text{Model AC}_5\text{F}) / \sigma \chi$$

$$\chi^2 / (407442 - 5140) = 0.896 \Rightarrow 1.007$$

4578x89



bad:1626=0.40% λ (Å) $z = 1.62500$

1 > +6.0 σ