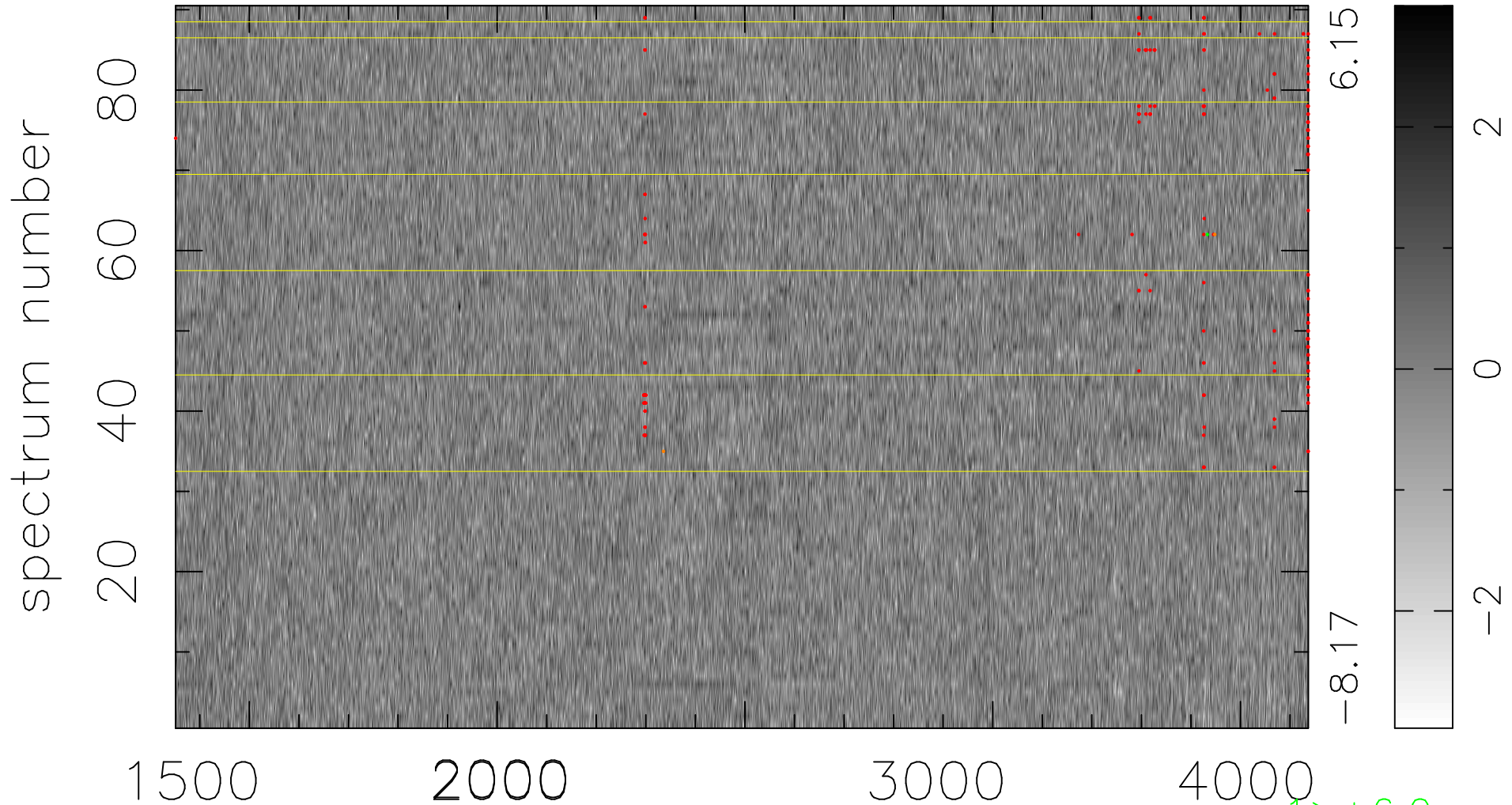


$$\chi(\lambda, t) = (\text{Data} - \text{Model } \text{AC}_5\text{B}_4\text{F}) / \sigma \chi$$

$$\chi^2 / (411480 - 5217) = 0.893 \Rightarrow 1.008$$

4572x90



bad:194=0.047% λ (Å) $z = 1.43701$

1 > +6.0σ

2 < -6.0σ