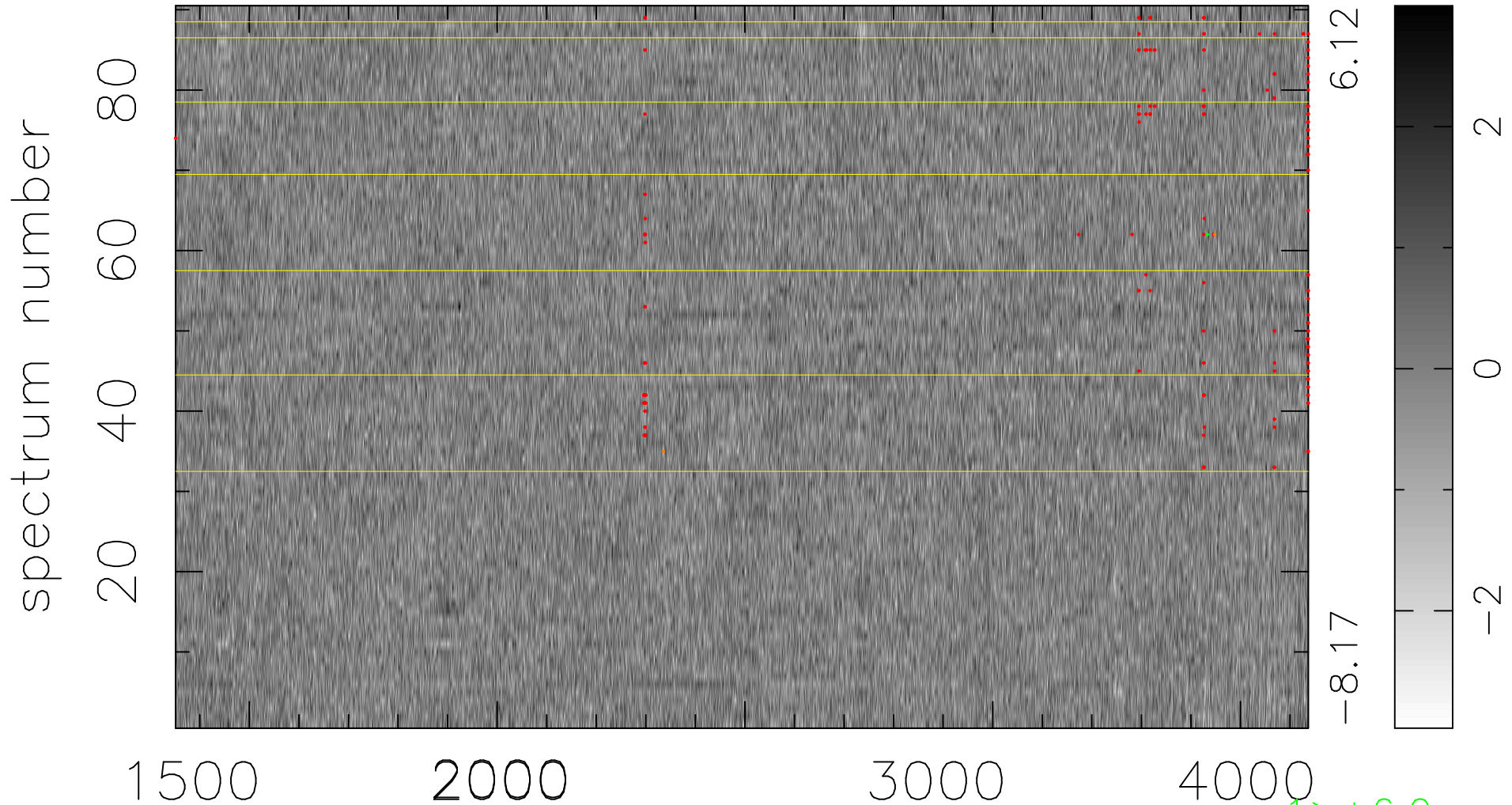


$$\chi(\lambda, t) = ( \text{Data} - \text{Model AC}_5\text{F} ) / \sigma \chi$$

$$\chi^2 / (411480 - 5053) = 0.897 \Rightarrow 1.007$$

4572x90



bad:194=0.047%  $\lambda$  (Å)  $z = 1.43701$

1 > +6.0 $\sigma$

2 < -6.0 $\sigma$