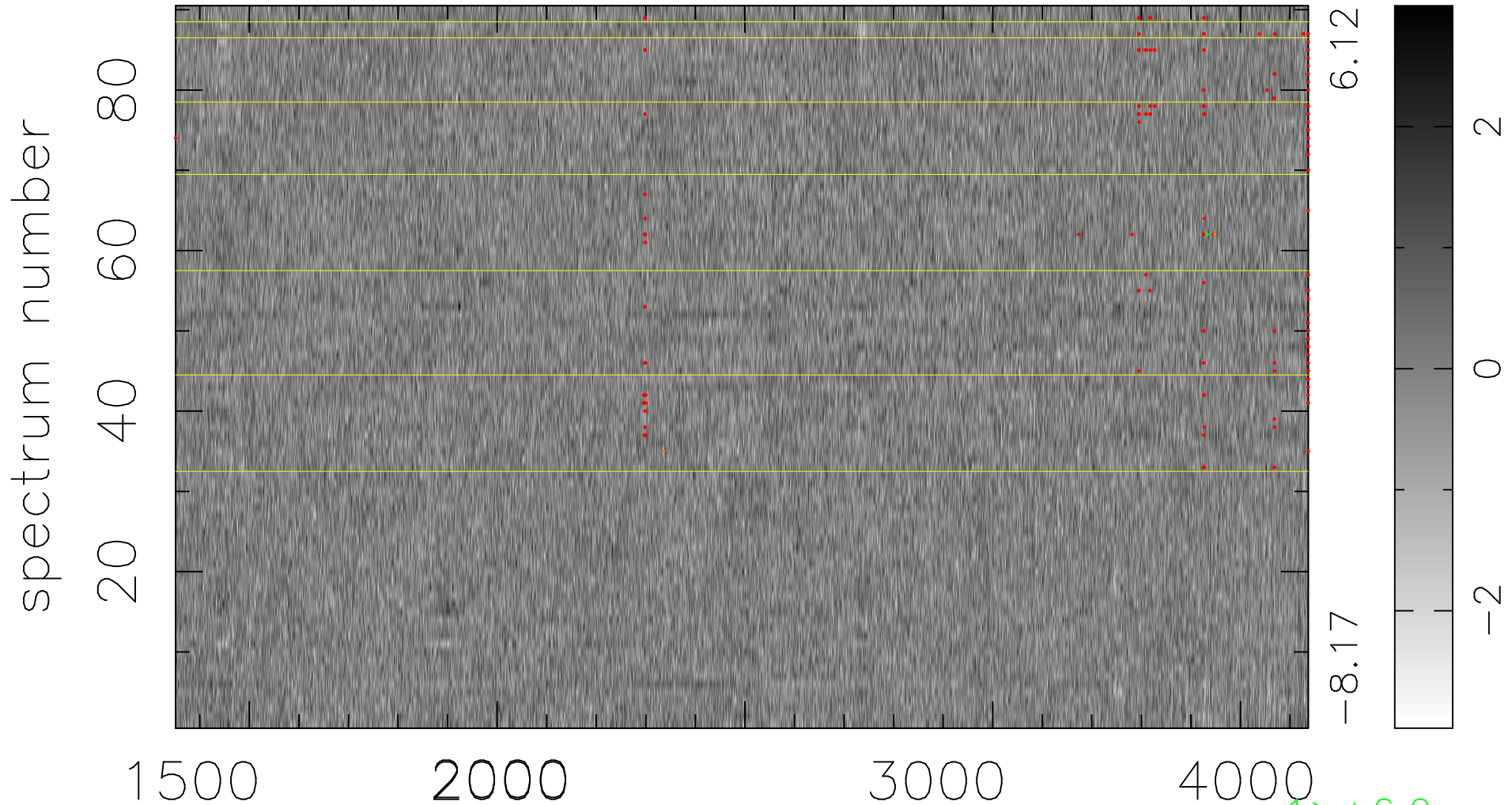


$$\chi(\lambda,t) = (\text{Data} - \text{Model } AC_5) / \sigma \chi$$

$$\chi^2 / (411480 - 4963) = 0.897 \Rightarrow 1.007$$

4572x90



bad:194=0.047% λ (Å) $z = 1.43701$

1 > +6.0σ

2 < -6.0σ