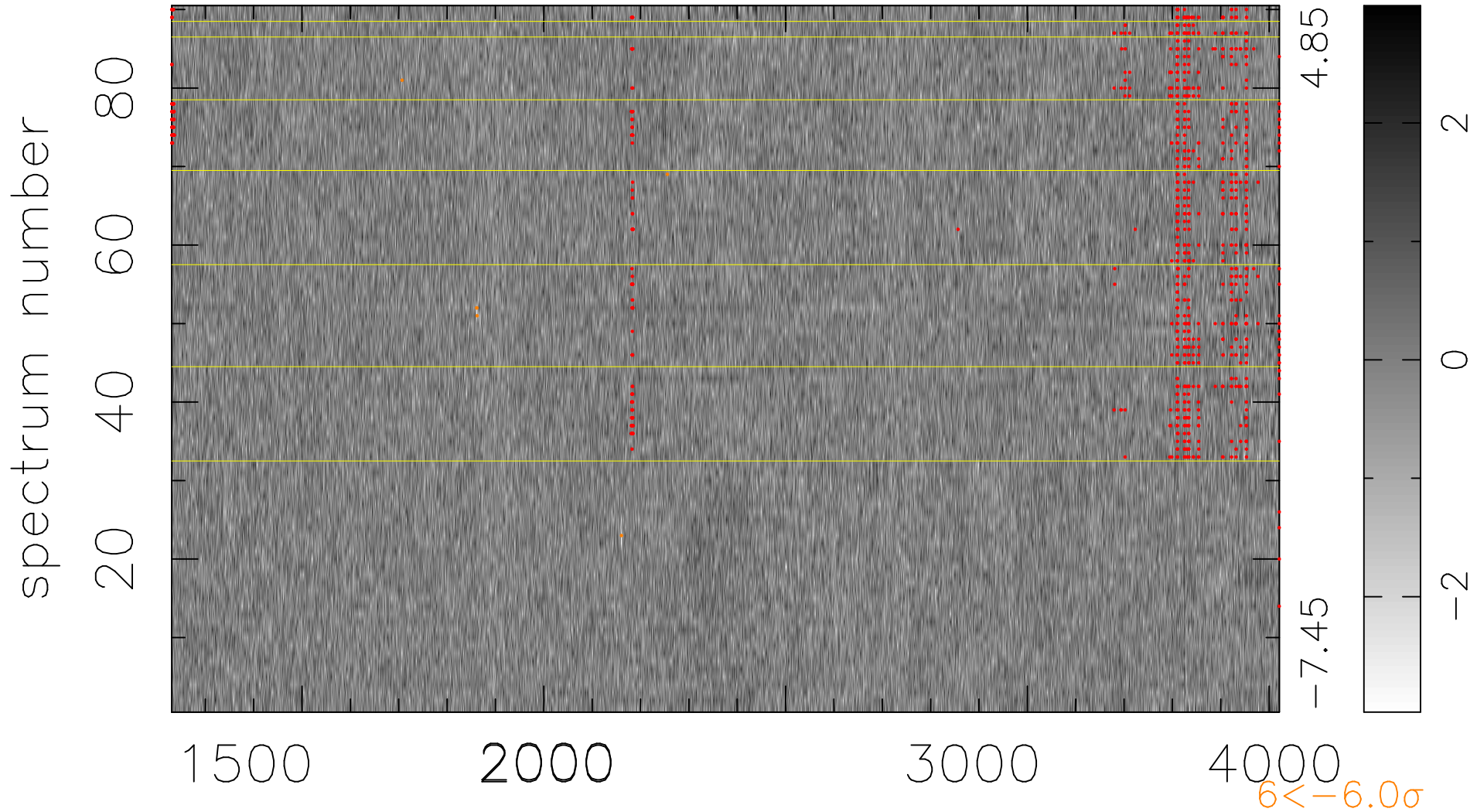


$$\chi(\lambda, t) = (\text{Data} - \text{Model } \text{AC}_5\text{B}_4\text{F}) / \sigma \chi$$

$$\chi^2 / (412380 - 5188) = 1.009 \Rightarrow 1.008$$

4582x90



bad:860=0.21%

λ (Å) $z = 1.56974$