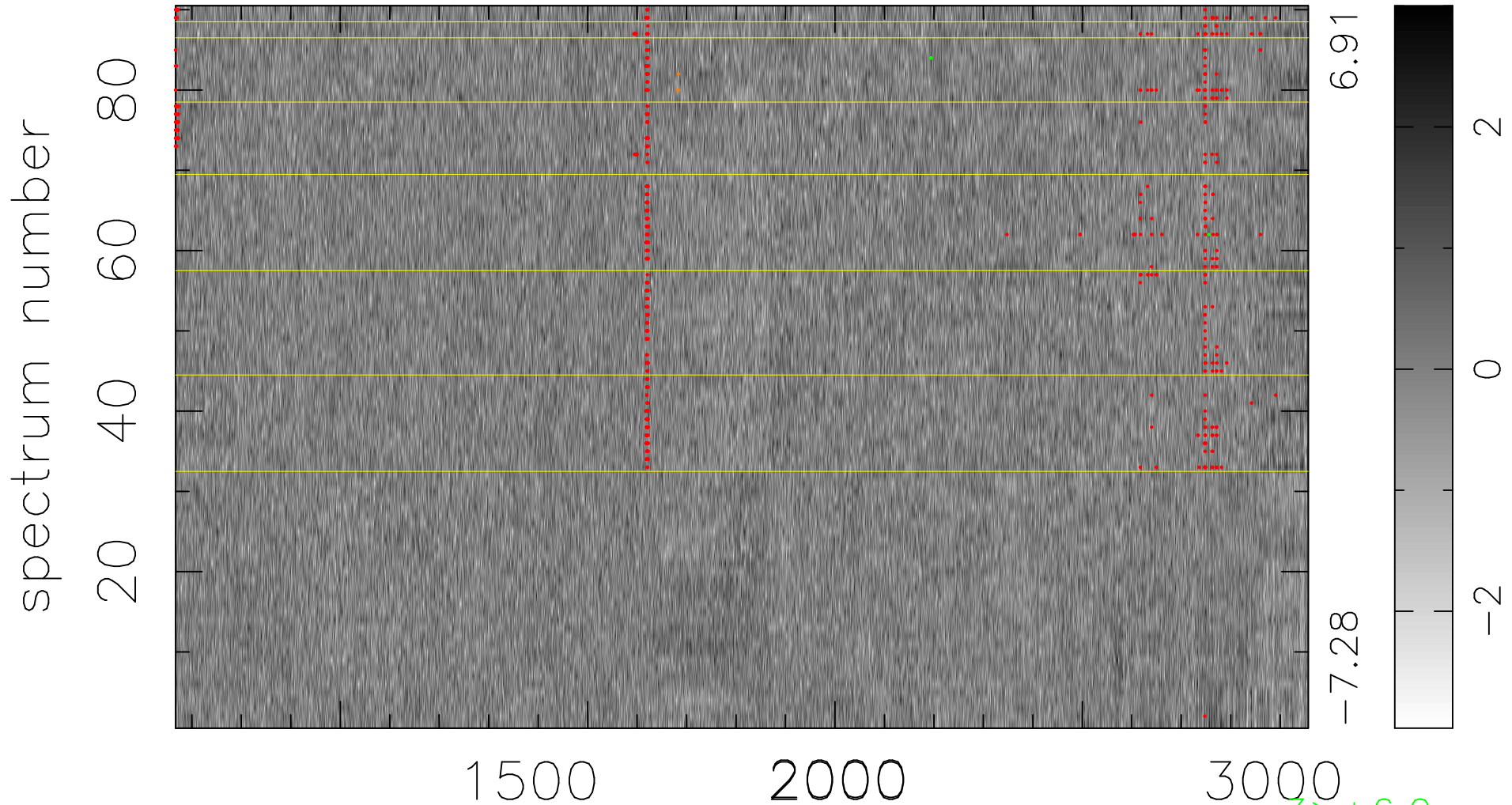


$$\chi(\lambda, t) = (\text{Data} - \text{Model } \text{AC}_5\text{B}_7\text{F}) / \sigma \chi$$

$$\chi^2 / (412200 - 5507) = 1.071 \Rightarrow 1.008$$

4580x90



bad:629=0.15%

λ (Å) $z = 2.32941$

$3 > +6.0\sigma$

$3 < -6.0\sigma$