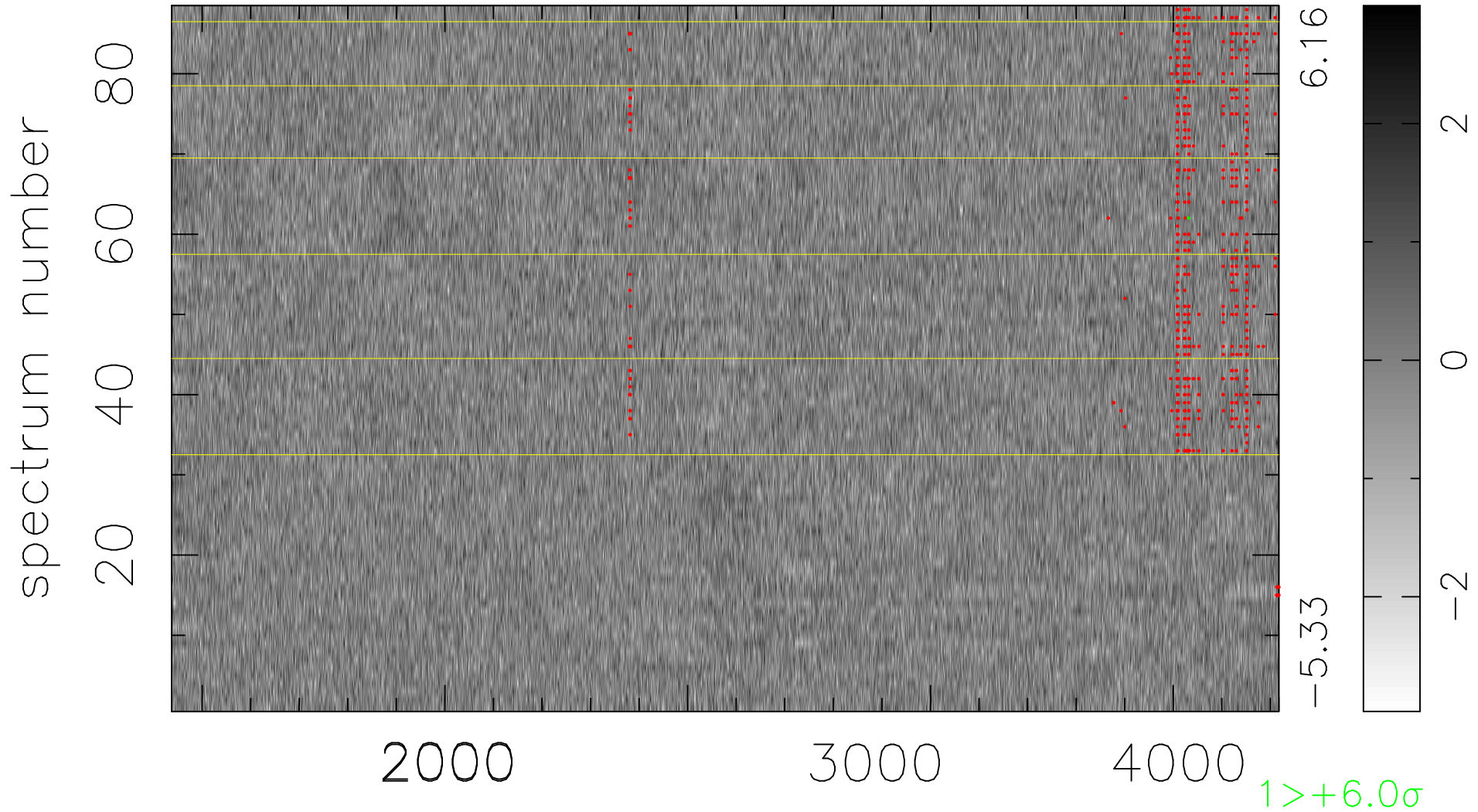


$$\chi(\lambda, t) = ( \text{Data} - \text{Model AC}_5\text{F} ) / \sigma \chi$$

$$\chi^2 / (401368 - 5028) = 0.890 \Rightarrow 1.008$$

4561 × 88



bad:567=0.14%     $\lambda$  (Å)     $z = 1.34540$