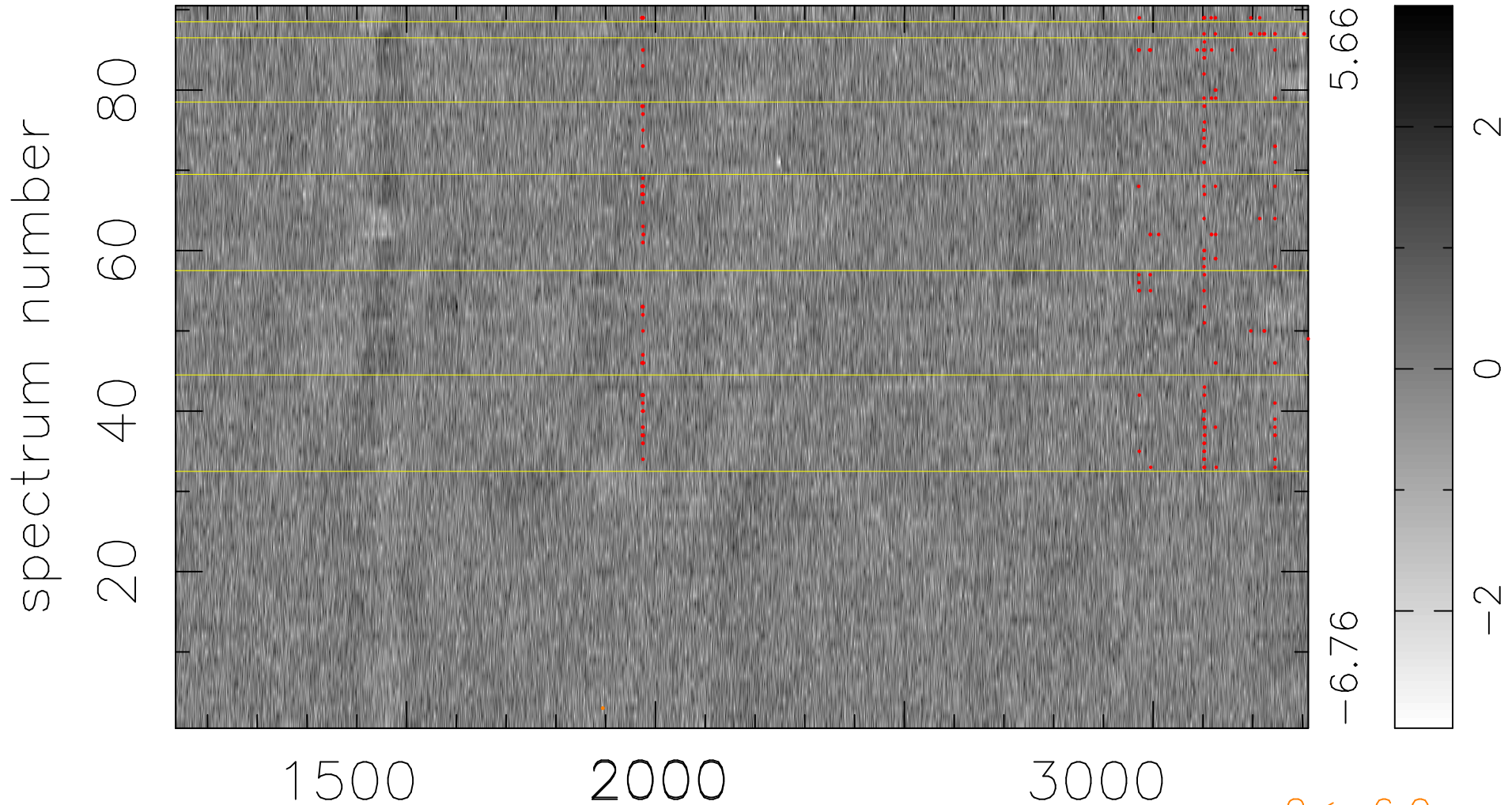


$$\chi(\lambda, t) = (\text{Data} - \text{Model AC}_5\text{F}) / \sigma \chi$$

$$\chi^2 / (409680 - 5125) = 0.929 \Rightarrow 1.007$$

4552x90



$2 < -6.0\sigma$

bad:207=0.051% λ (Å) $z = 1.82884$