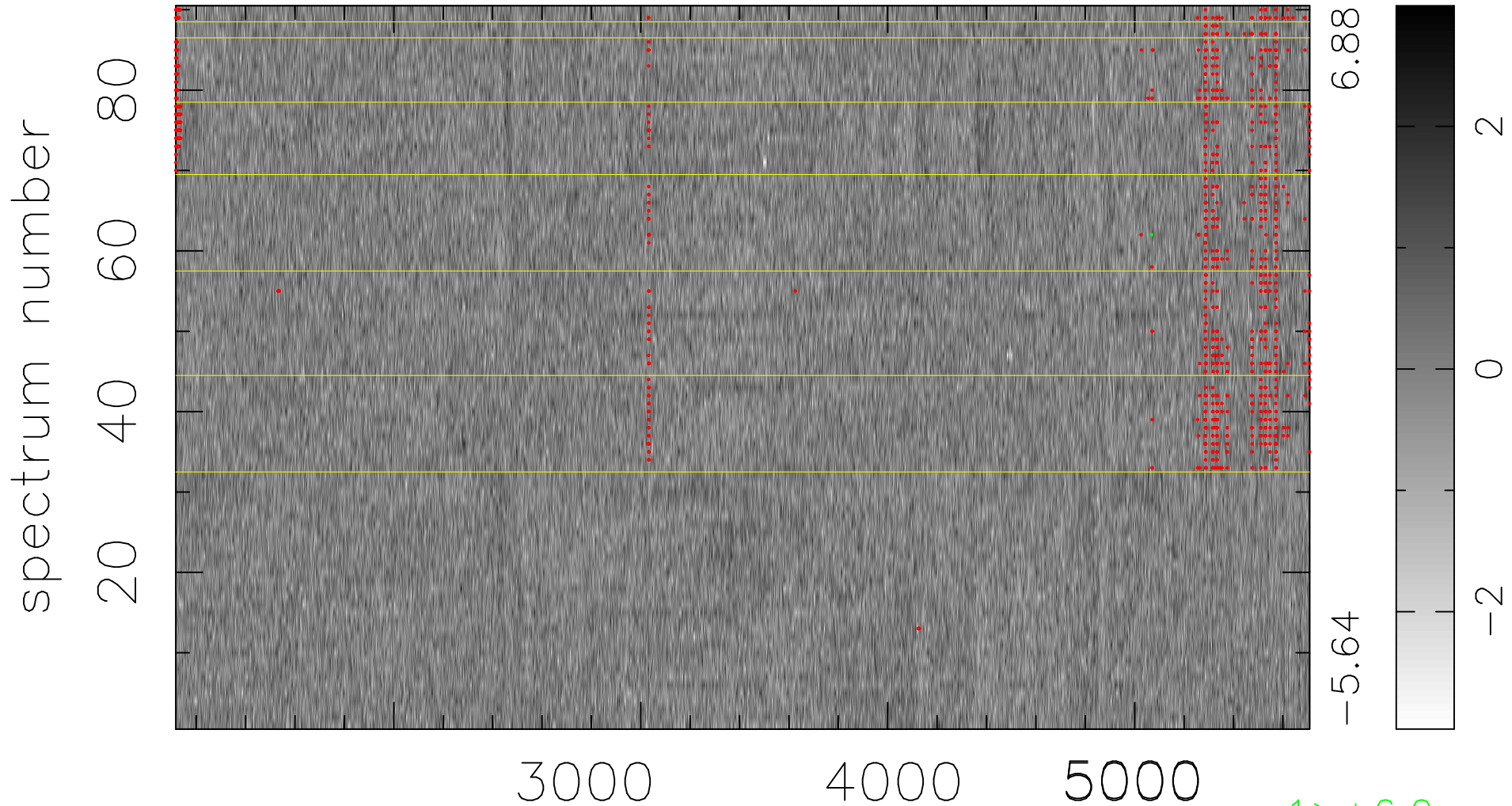


$$\chi(\lambda, t) = (\text{Data} - \text{Model } \text{AC}_5\text{B}_3\text{F}) / \sigma \chi$$

$$\chi^2 / (413280 - 5095) = 0.905 \Rightarrow 1.007$$

4592x90



bad:947=0.23%

λ (Å) $z = 0.75094$