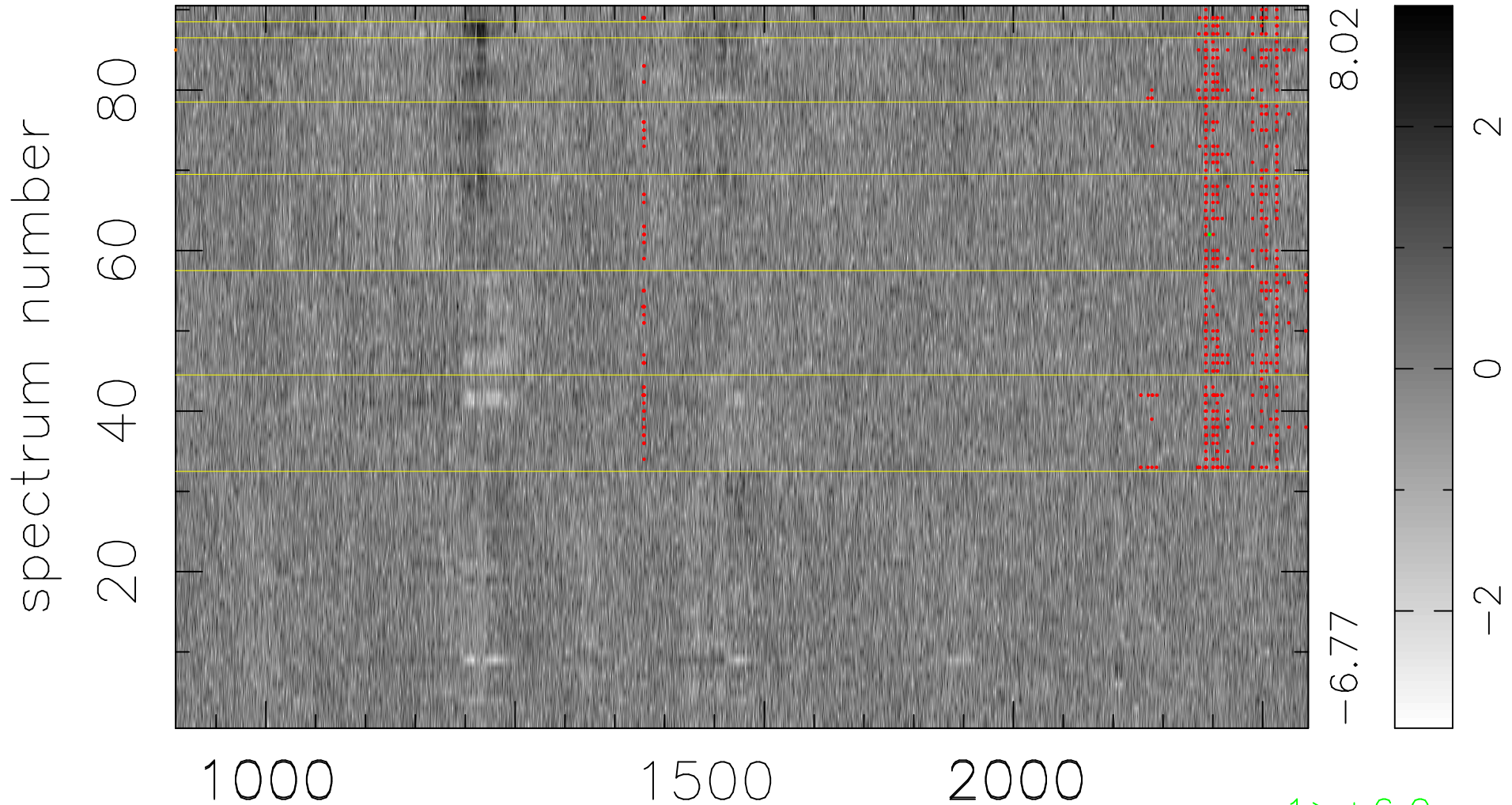


$$\chi(\lambda, t) = (\text{Data} - \text{Model AC}_5\text{F}) / \sigma \chi$$

$$\chi^2 / (409140 - 5217) = 0.909 \Rightarrow 1.007$$

4546x90



bad:587=0.14%

λ (Å) $z = 2.93380$

1 > +6.0 σ

1 < -6.0 σ