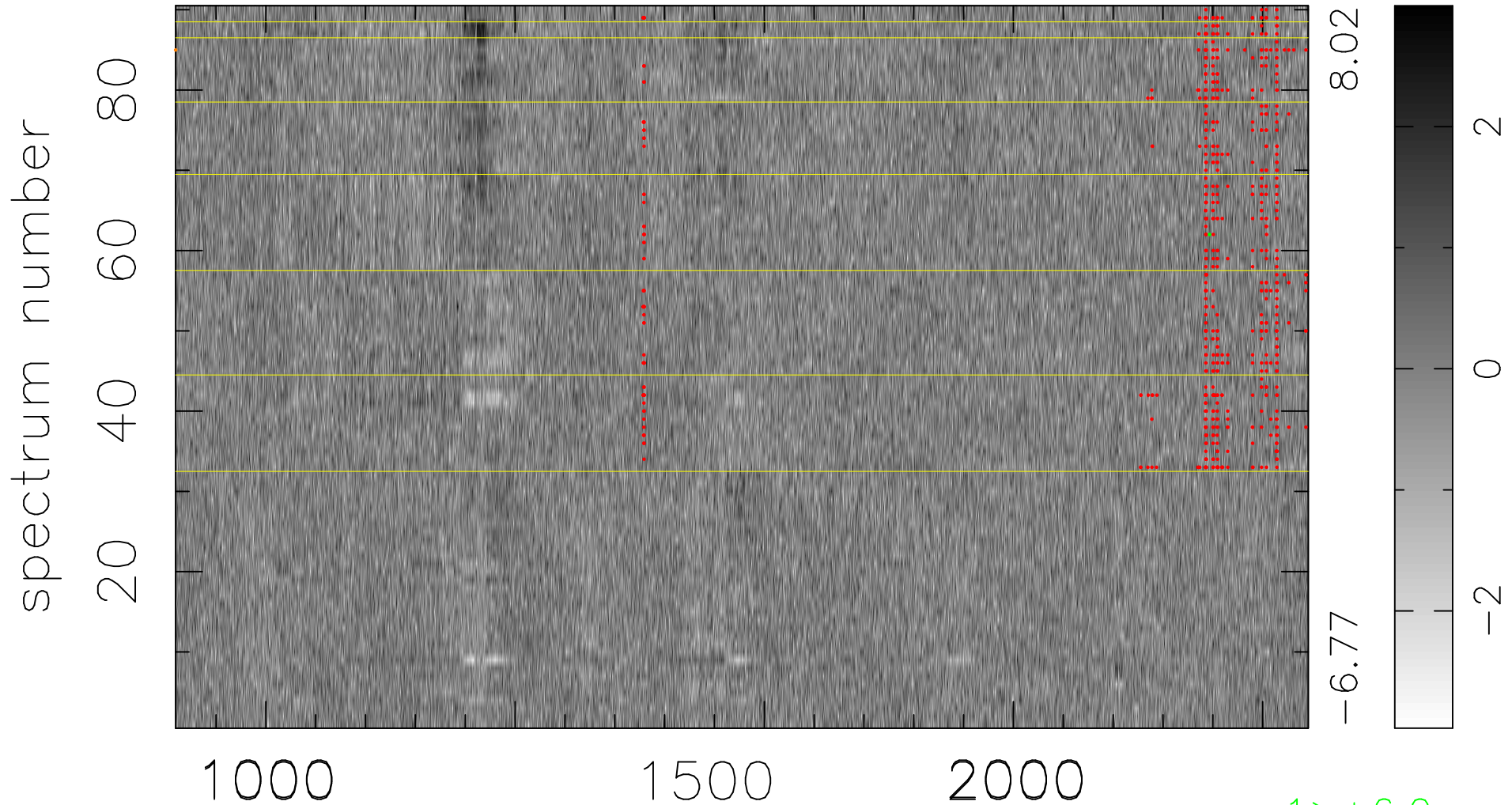


$$\chi(\lambda,t) = ( \text{Data} - \text{Model } AC_5 ) / \sigma \chi$$

$$\chi^2 / (409140 - 5127) = 0.908 \Rightarrow 1.007$$

4546x90



bad:587=0.14%

$\lambda$  (Å)  $z = 2.93380$

1 > +6.0 $\sigma$

1 < -6.0 $\sigma$