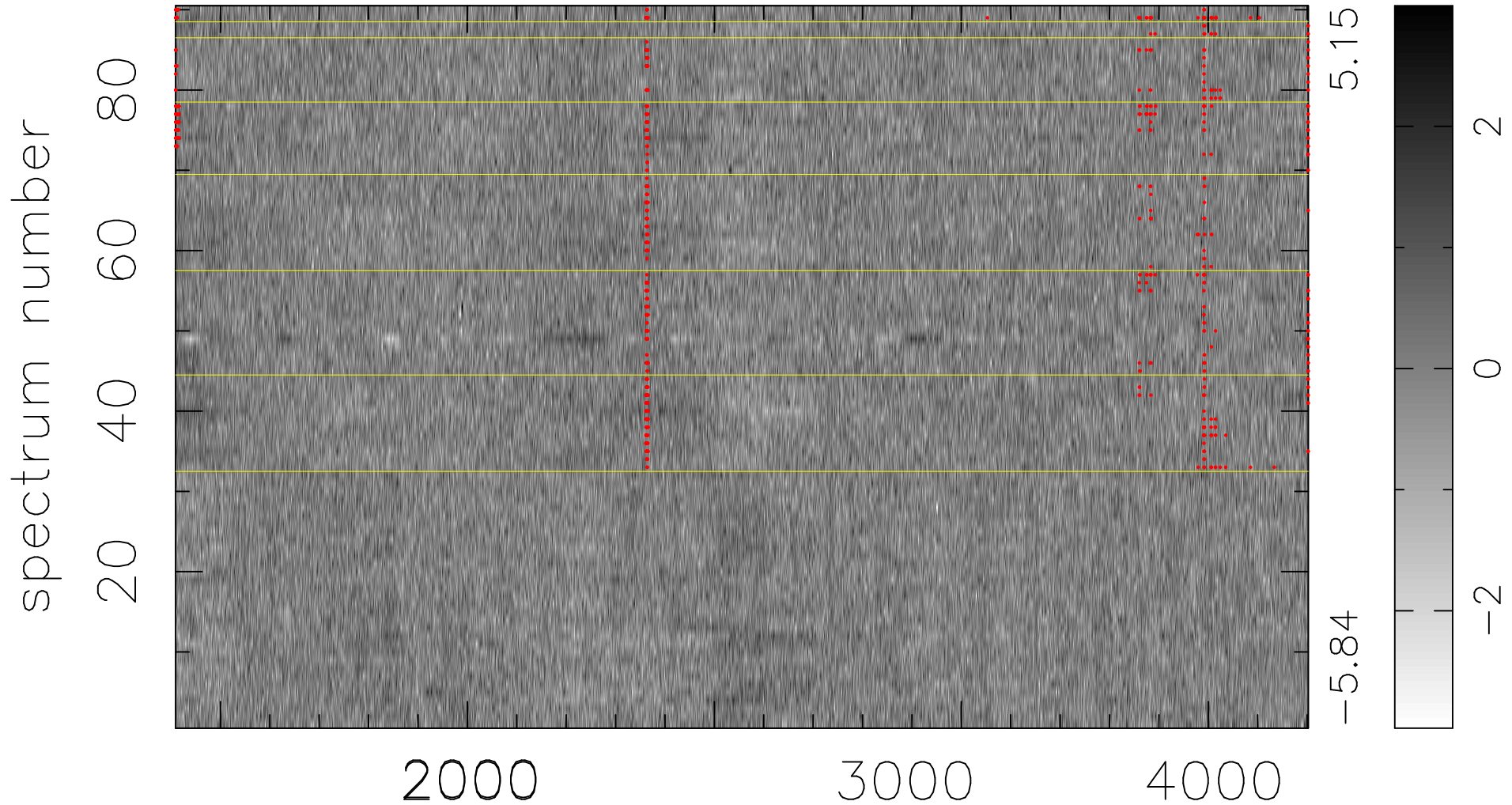


$$\chi(\lambda, t) = ( \text{Data} - \text{Model } \text{AC}_5\text{B}_4\text{F} ) / \sigma \chi$$

$$\chi^2 / (412830 - 5229) = 0.970 \Rightarrow 1.008$$

4587 × 90



bad:717=0.17%     $\lambda$  (Å)     $z = 1.36448$