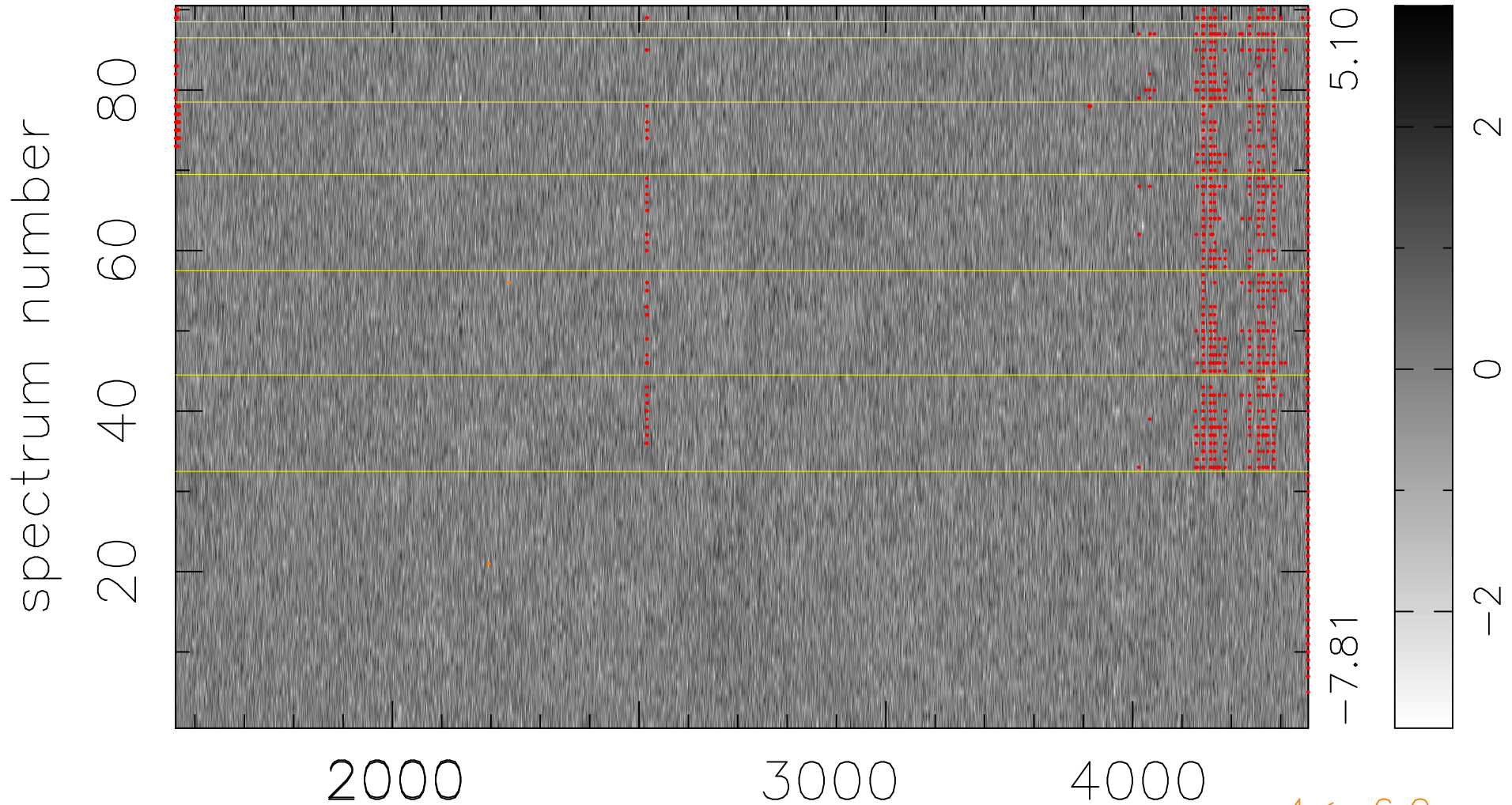


$$\chi(\lambda, t) = ( \text{Data} - \text{Model } \text{AC}_5\text{B}_4\text{F} ) / \sigma \chi$$

$$\chi^2 / (413190 - 5212) = 0.958 \Rightarrow 1.008$$

4591 × 90



bad:1215=0.29%  $\lambda$  (Å)  $z = 1.20454$