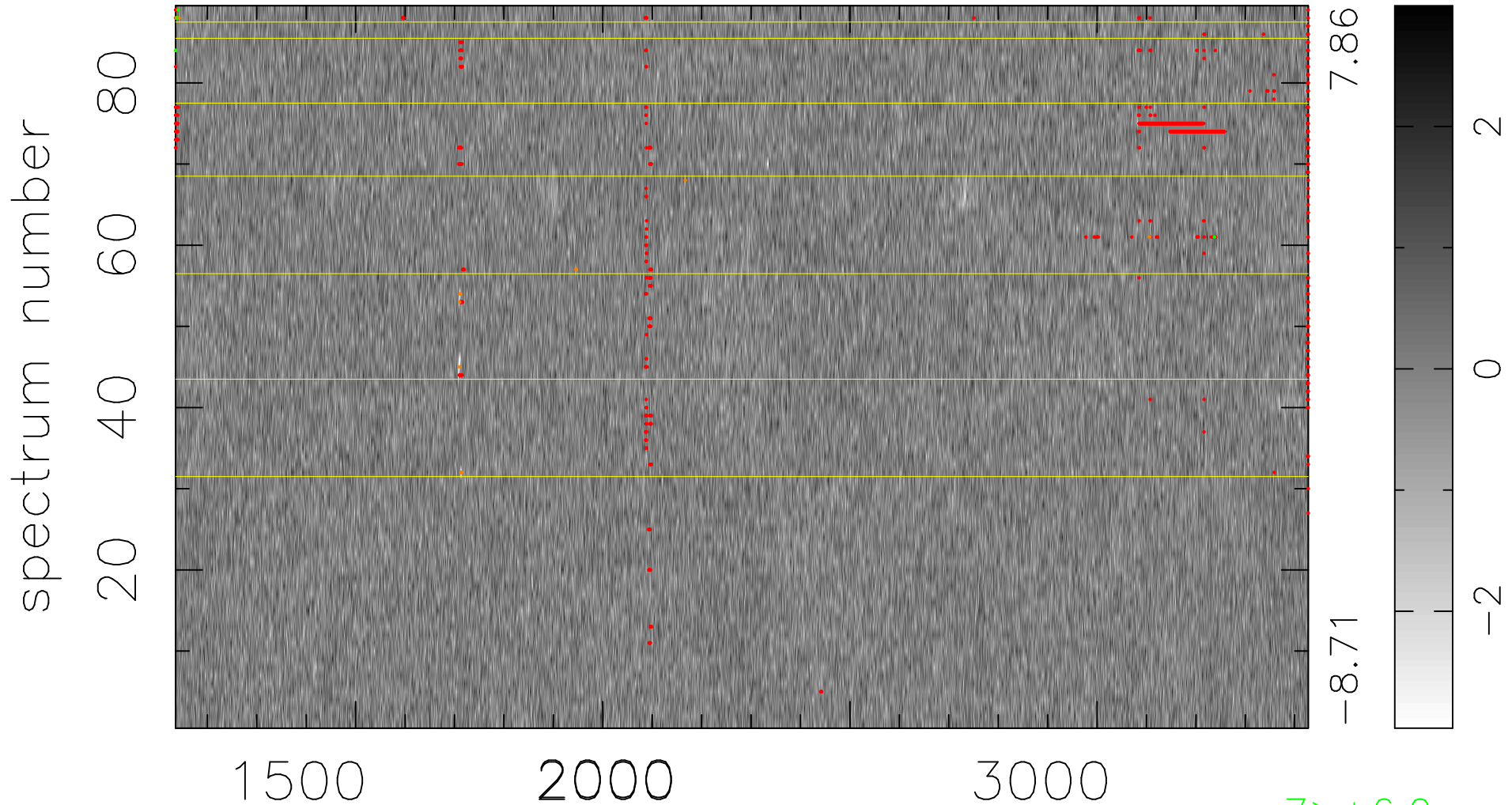


$$\chi(\lambda, t) = ( \text{Data} - \text{Model AC}_5\text{F} ) / \sigma \chi$$

$$\chi^2 / (407976 - 5147) = 0.965 \Rightarrow 1.007$$

4584x89



bad:1031=0.25%  $\lambda$  (Å)  $z = 1.68501$

7 > +6.0 $\sigma$   
19 < -6.0 $\sigma$