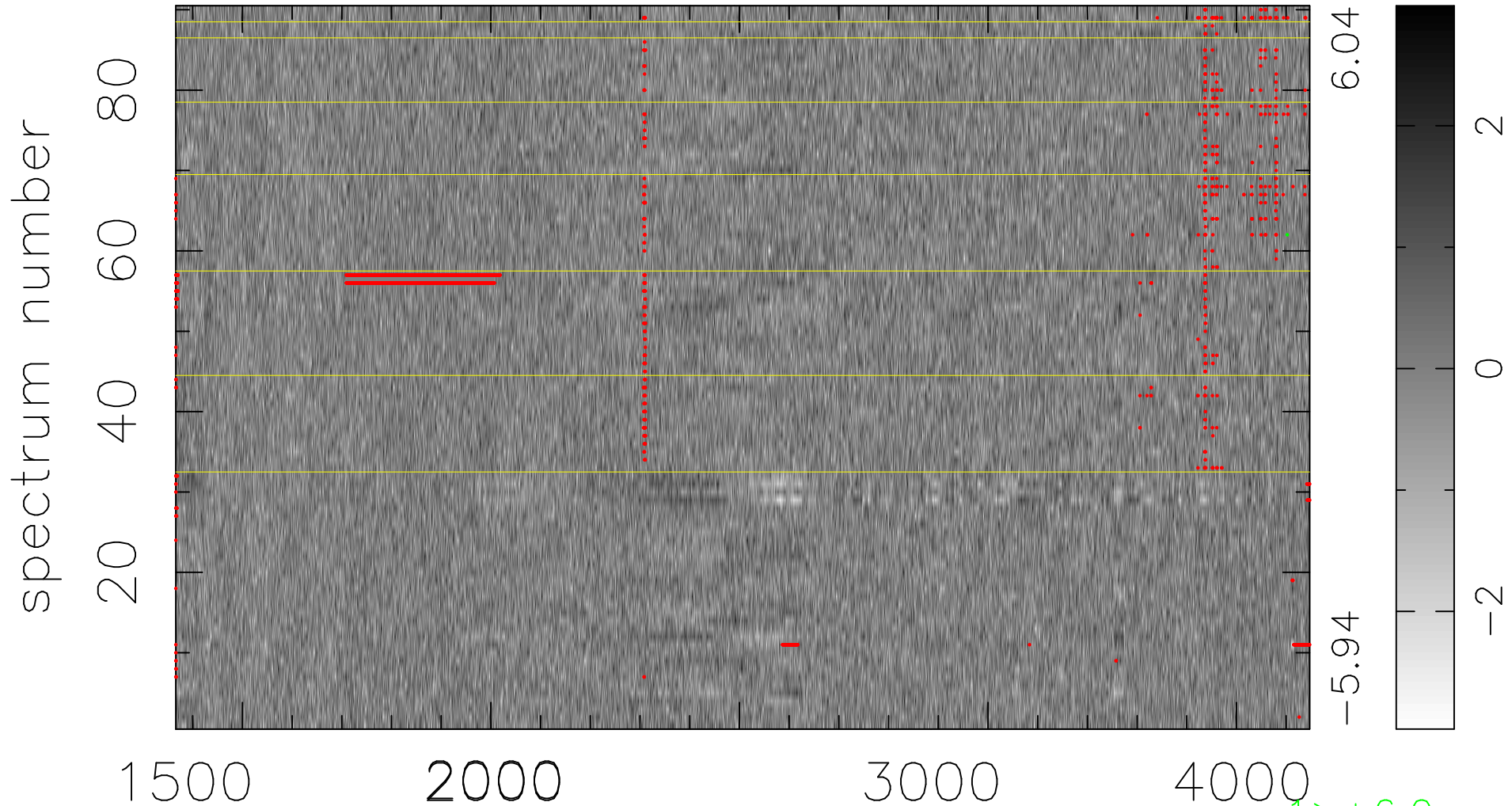


$$\chi(\lambda, t) = (\text{Data} - \text{Model } \text{AC}_5\text{B}_4\text{F}) / \sigma \chi$$

$$\chi^2 / (410670 - 5179) = 1.008 \Rightarrow 1.008$$

4563x90



bad:2053=0.50% λ (Å) $z = 1.42486$