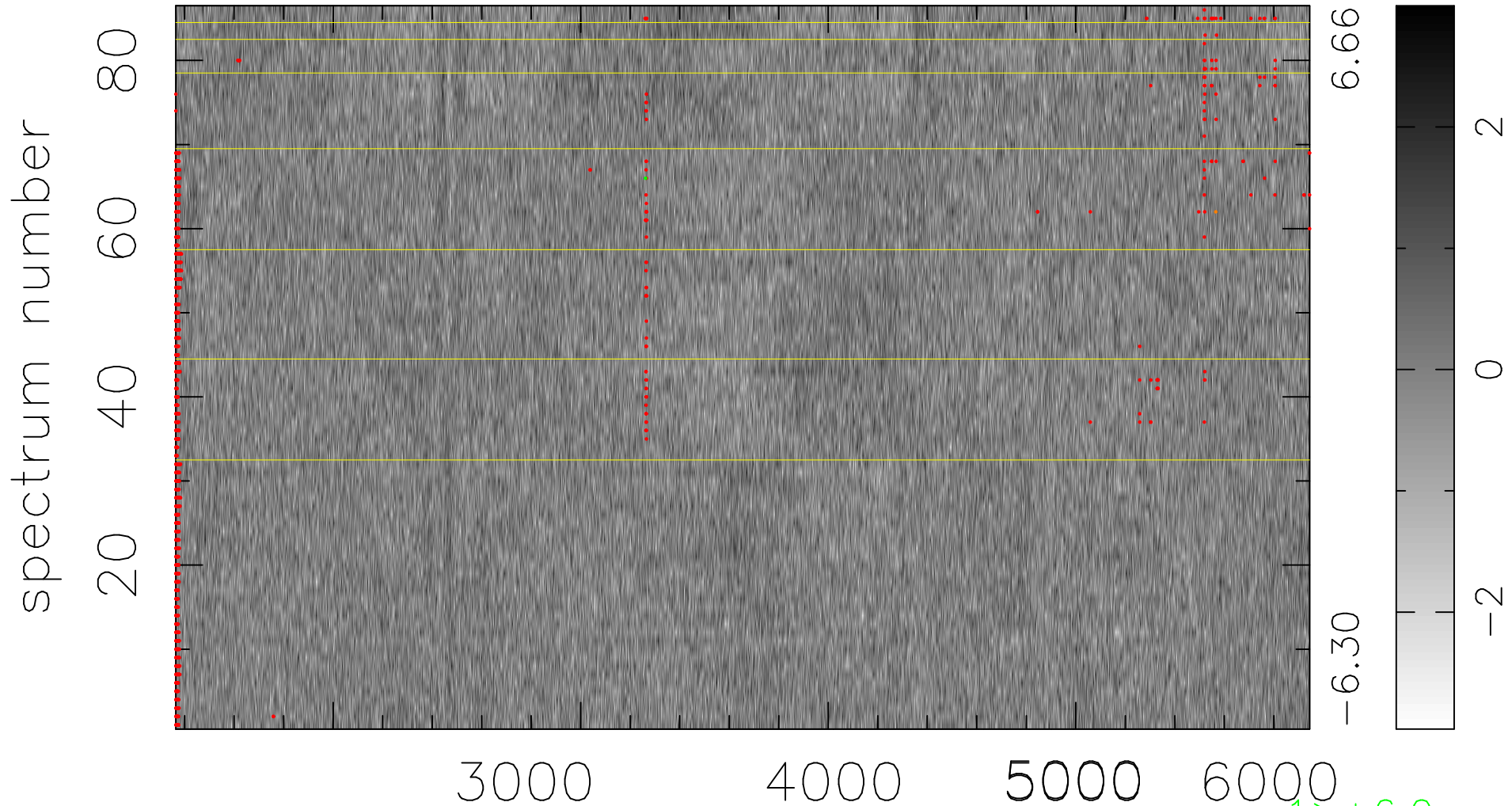


$$\chi(\lambda, t) = (\text{Data} - \text{Model } \text{AC}_5\text{B}_3\text{F}) / \sigma \chi$$

$$\chi^2 / (393966 - 5061) = 0.898 \Rightarrow 1.008$$

4581 × 86



bad:1132=0.29% λ (Å) $z = 0.65981$

1 > +6.0σ
1 < -6.0σ