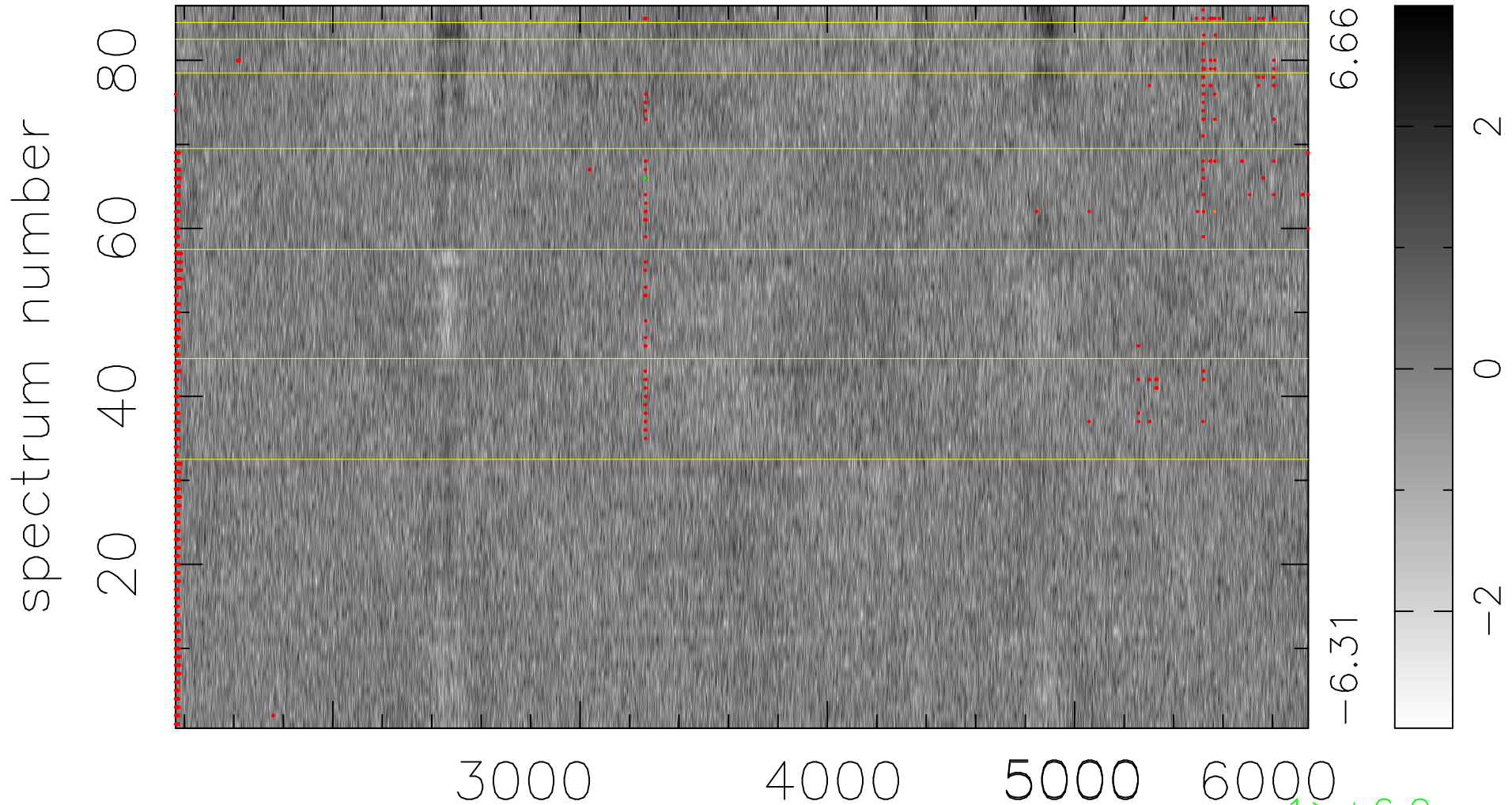


$$\chi(\lambda, t) = (\text{Data} - \text{Model AC}_5\text{F}) / \sigma \chi$$

$$\chi^2 / (393966 - 4940) = 0.907 \Rightarrow 1.007$$

4581 × 86



bad:1132=0.29% λ (Å) $z = 0.65981$

1 > +6.0σ

1 < -6.0σ