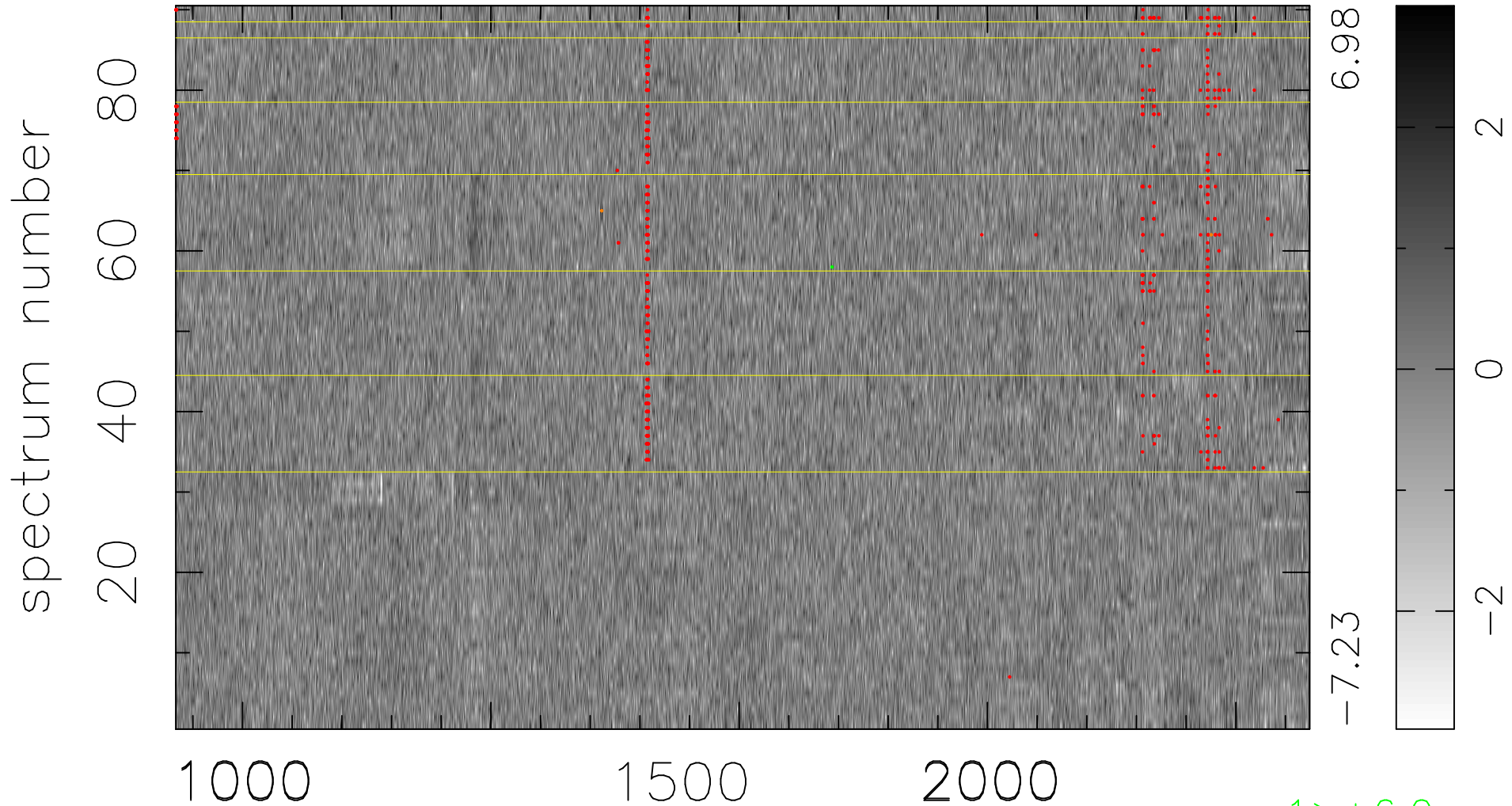


$$\chi(\lambda, t) = (\text{Data} - \text{Model } \text{AC}_5\text{B}_6\text{F}) / \sigma \chi$$

$$\chi^2 / (411030 - 5362) = 1.023 \Rightarrow 1.010$$

4567x90



bad:584=0.14%

λ (Å) $z = 2.83155$

1 > +6.0 σ

2 < -6.0 σ