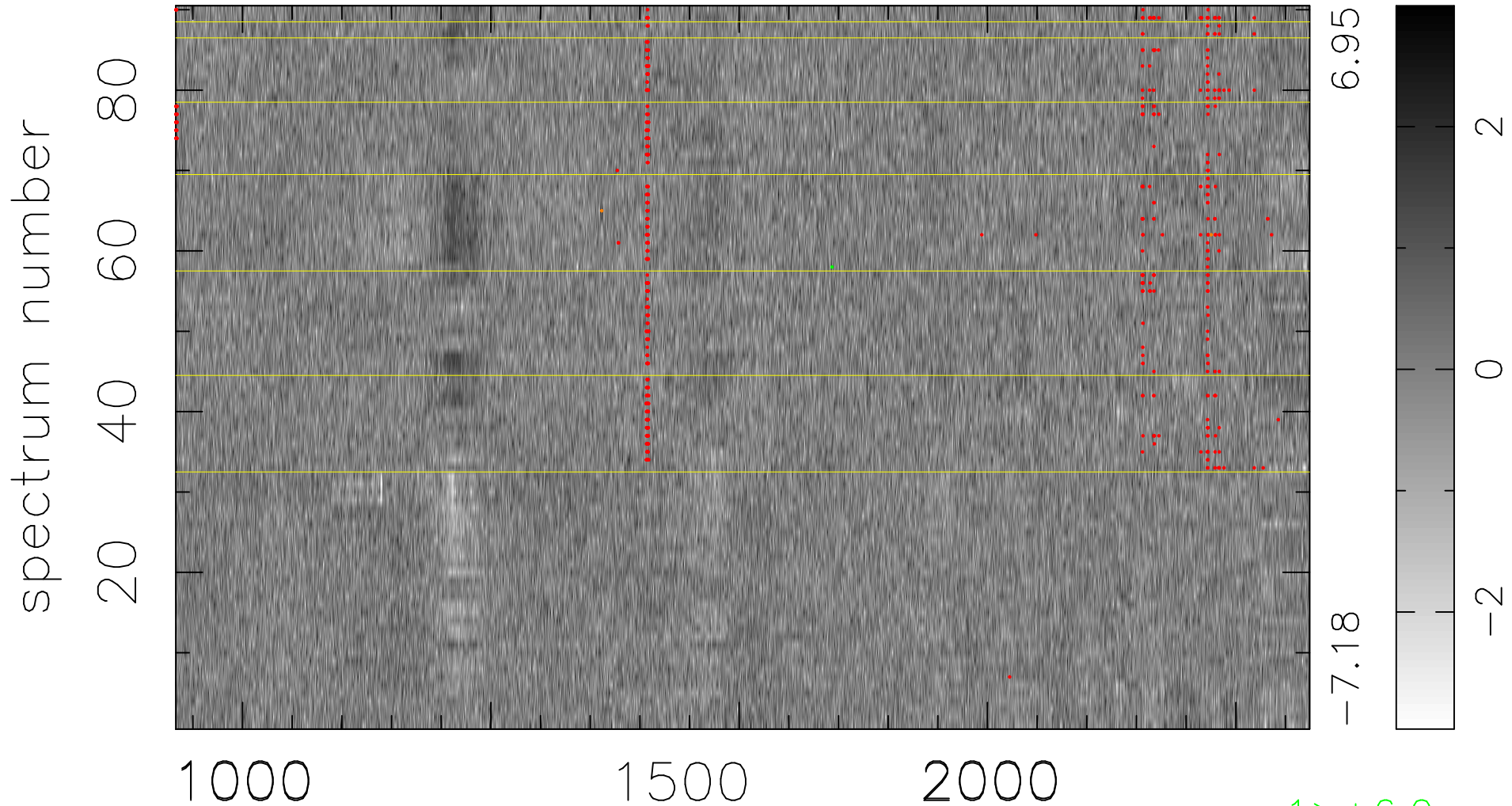


$$\chi(\lambda, t) = (\text{Data} - \text{Model } AC_5) / \sigma \chi$$

$$\chi^2 / (411030 - 5147) = 1.043 \Rightarrow 1.007$$

4567x90



bad:584=0.14%

λ (Å) $z = 2.83155$

1 > +6.0σ

2 < -6.0σ