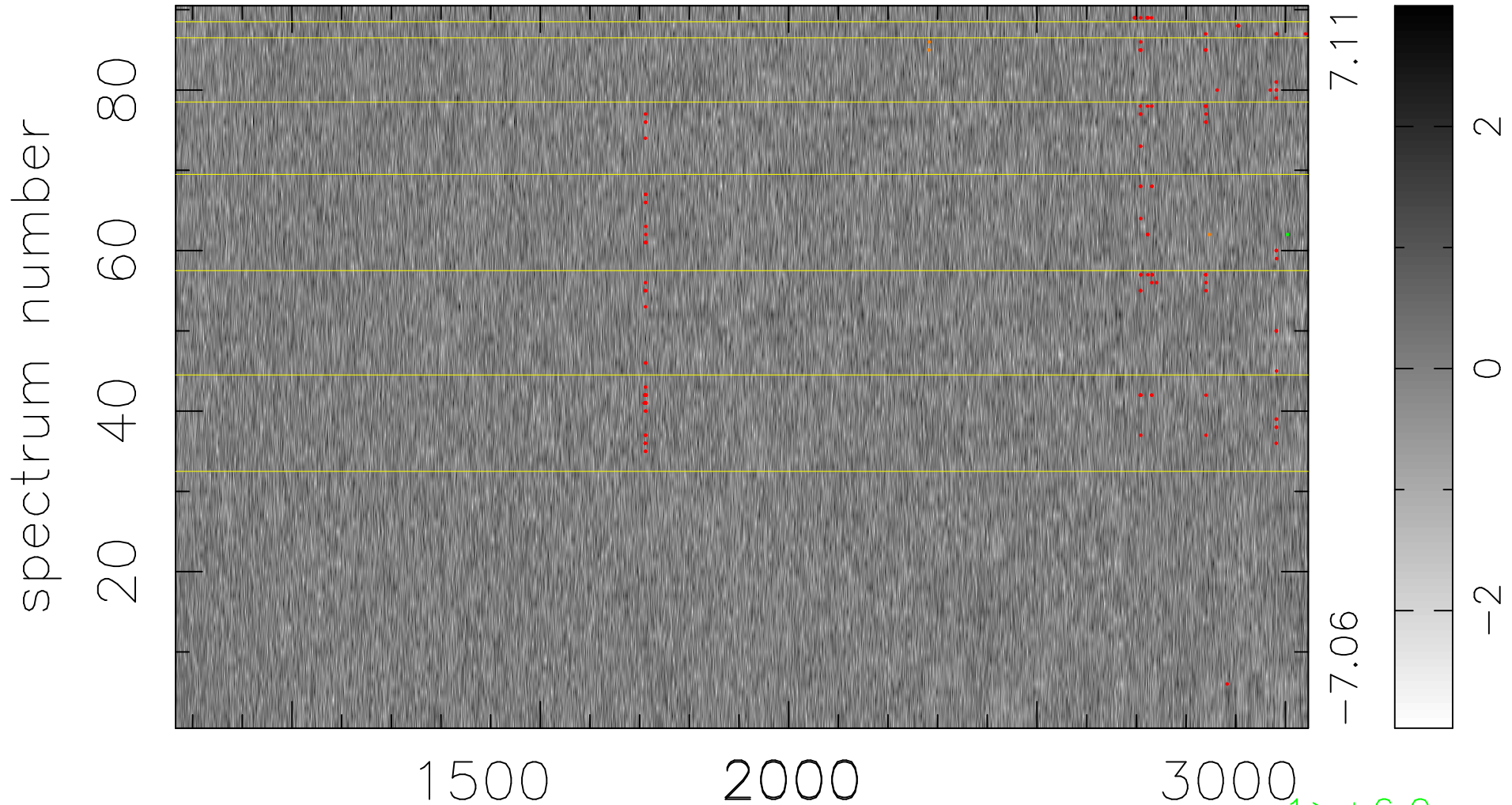


$$\chi(\lambda, t) = (\text{Data} - \text{Model } \text{AC}_5\text{B}_7\text{F}) / \sigma \chi$$

$$\chi^2 / (410580 - 5511) = 0.886 \Rightarrow 1.008$$

4562x90



7.11

-7.06

2

0

-2

1 > +6.0σ

3 < -6.0σ

bad:130=0.032% λ (Å) z = 2.19290