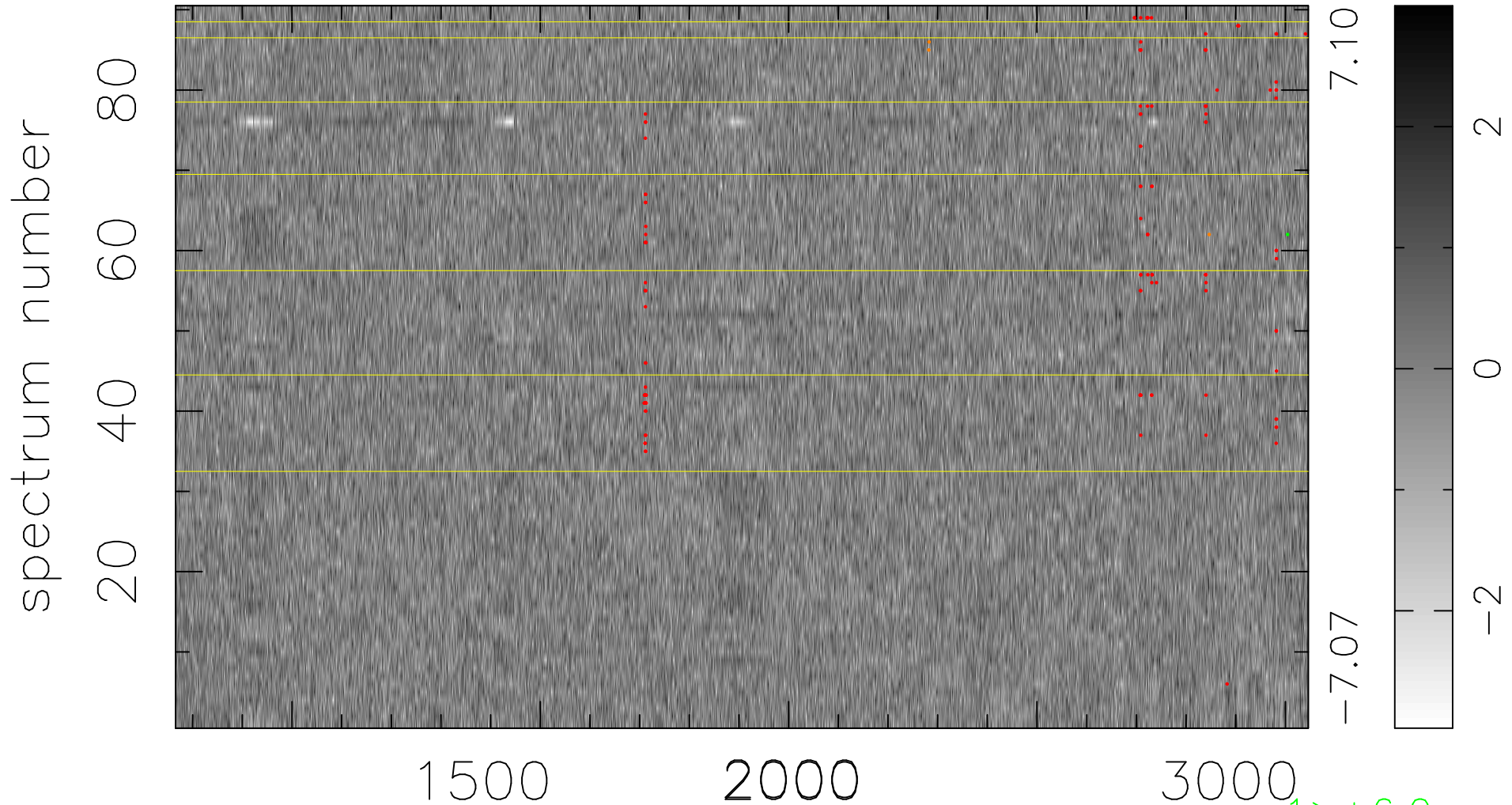


$$\chi(\lambda, t) = (\text{Data} - \text{Model AC}_5\text{F}) / \sigma \chi$$

$$\chi^2 / (410580 - 5322) = 0.897 \Rightarrow 1.007$$

4562x90



7.10
-7.07

2
0
-2

1 > +6.0σ

3 < -6.0σ

bad:130=0.032% λ (Å) z = 2.19290