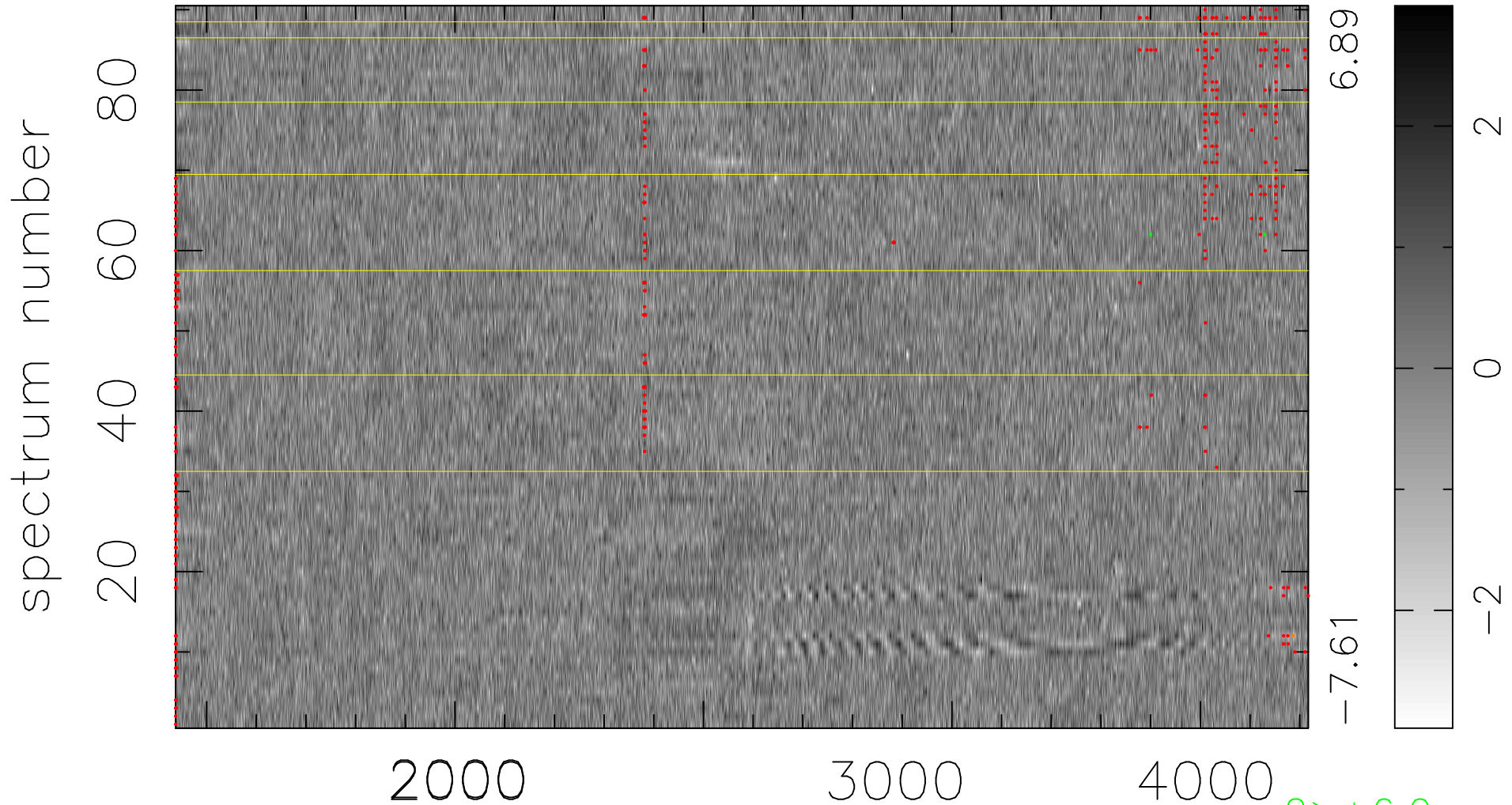


$$\chi(\lambda, t) = ( \text{Data} - \text{Model } \text{AC}_5\text{B}_4\text{F} ) / \sigma \chi$$

$$\chi^2 / (410400 - 5206) = 0.926 \Rightarrow 1.007$$

4560x90



bad:491=0.12%

$\lambda$  (Å)  $z = 1.34508$

2 > +6.0σ

1 < -6.0σ