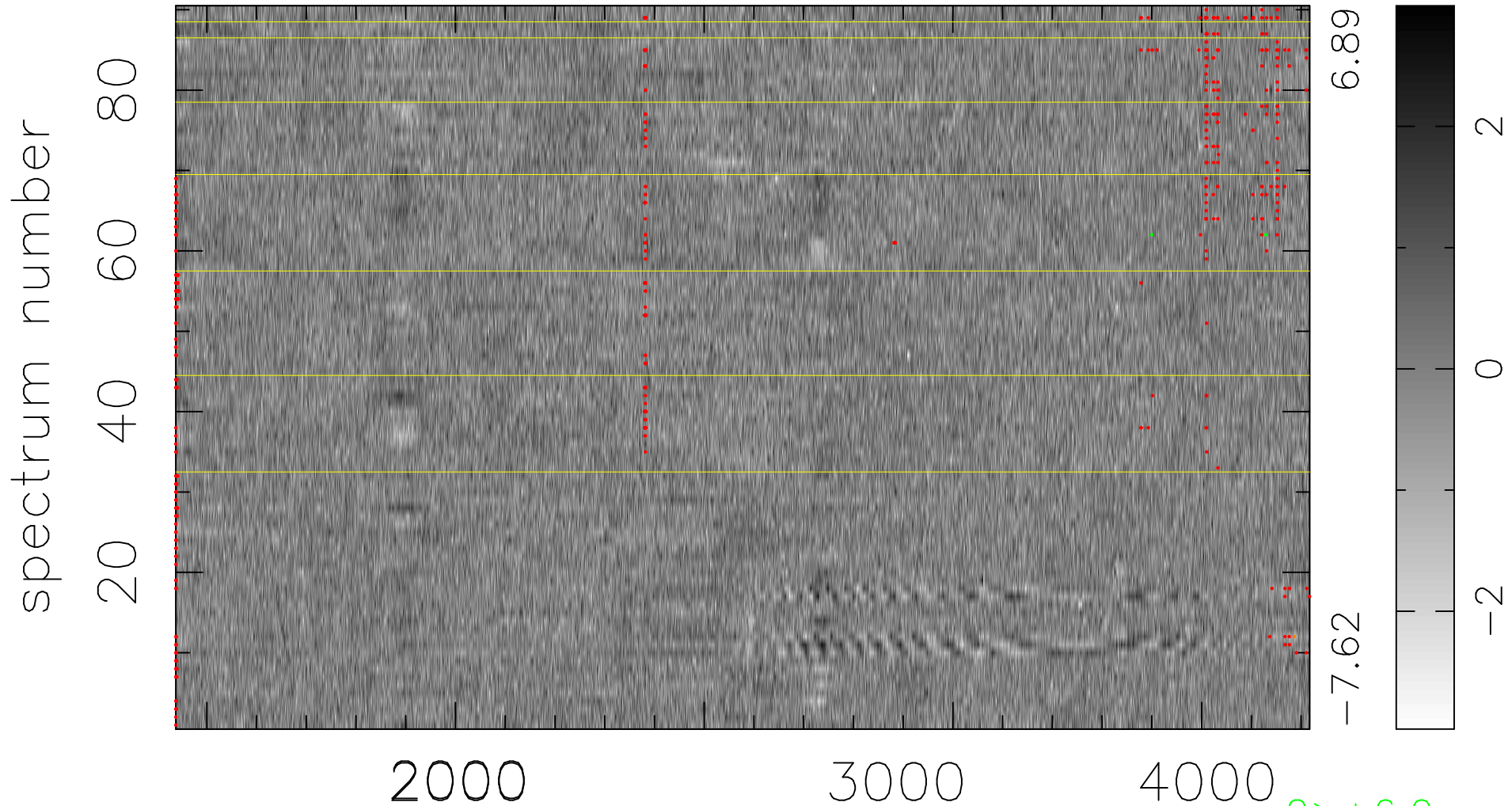


$$\chi(\lambda, t) = (\text{Data} - \text{Model AC}_5\text{F}) / \sigma \chi$$

$$\chi^2 / (410400 - 5035) = 0.934 \Rightarrow 1.007$$

4560x90



2 > +6.0σ

1 < -6.0σ

bad:491=0.12%

λ (Å) z = 1.34508