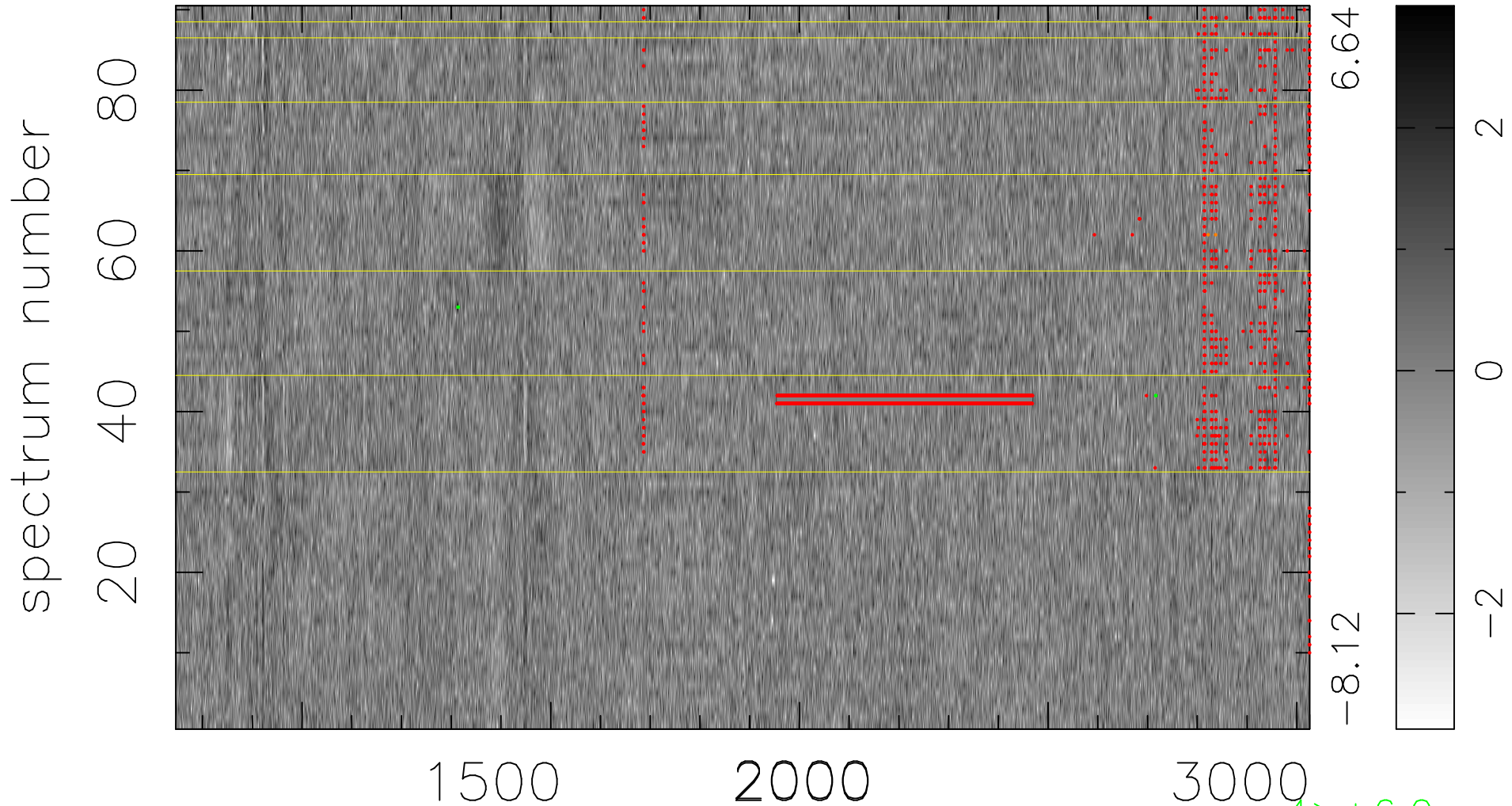


$$\chi(\lambda, t) = (\text{Data} - \text{Model } \text{AC}_5\text{B}_7\text{F}) / \sigma \chi$$

$$\chi^2 / (410400 - 5469) = 0.920 \Rightarrow 1.009$$

4560x90



bad:2746=0.67% λ (Å) $z = 2.22952$

4 > +6.0 σ

2 < -6.0 σ