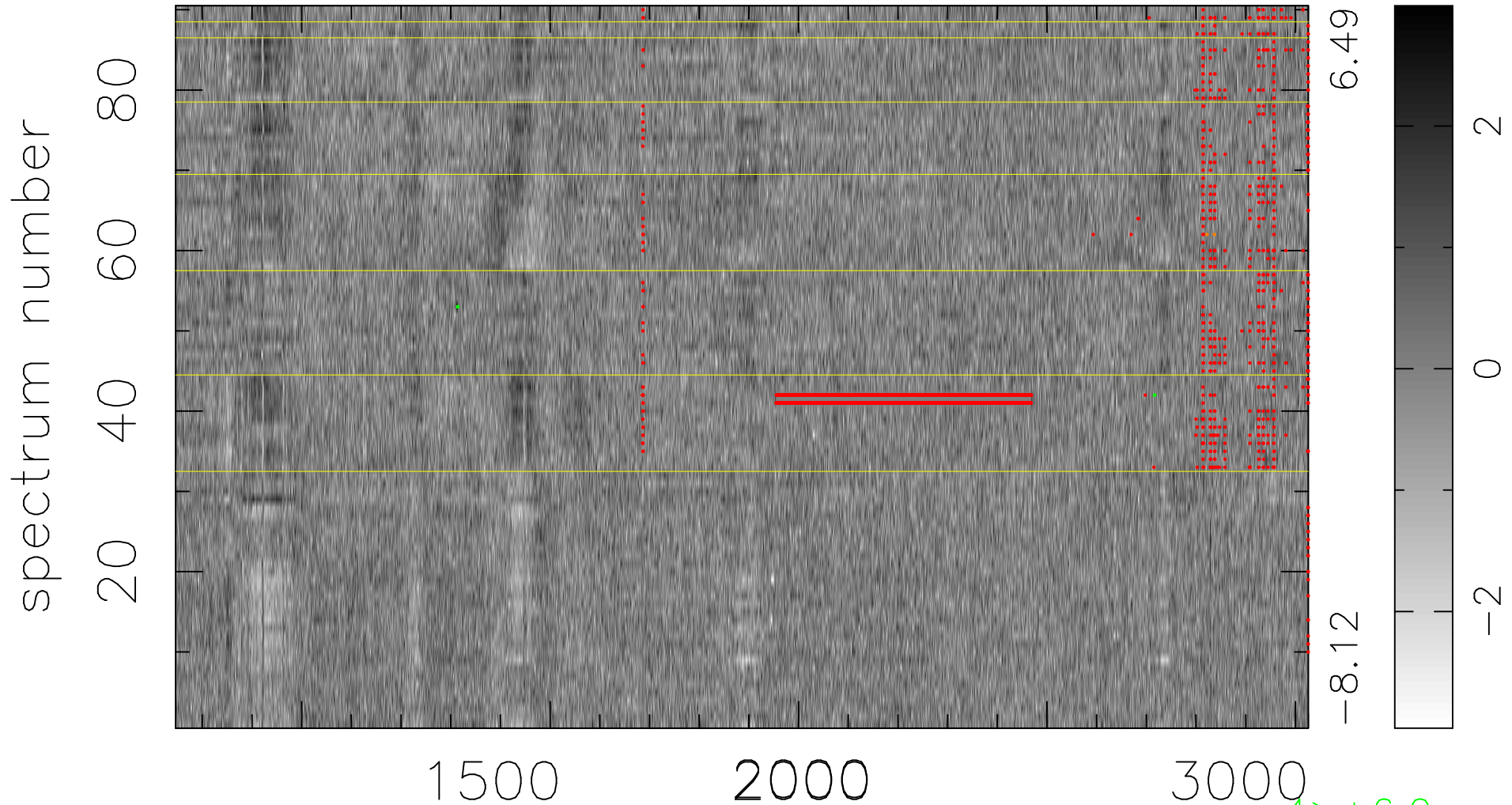


$$\chi(\lambda, t) = (\text{Data} - \text{Model AC}_5\text{F}) / \sigma \chi$$

$$\chi^2 / (410400 - 5319) = 0.952 \Rightarrow 1.008$$

4560x90



bad:2746=0.67% λ (Å) $z = 2.22952$

4 > +6.0 σ

2 < -6.0 σ