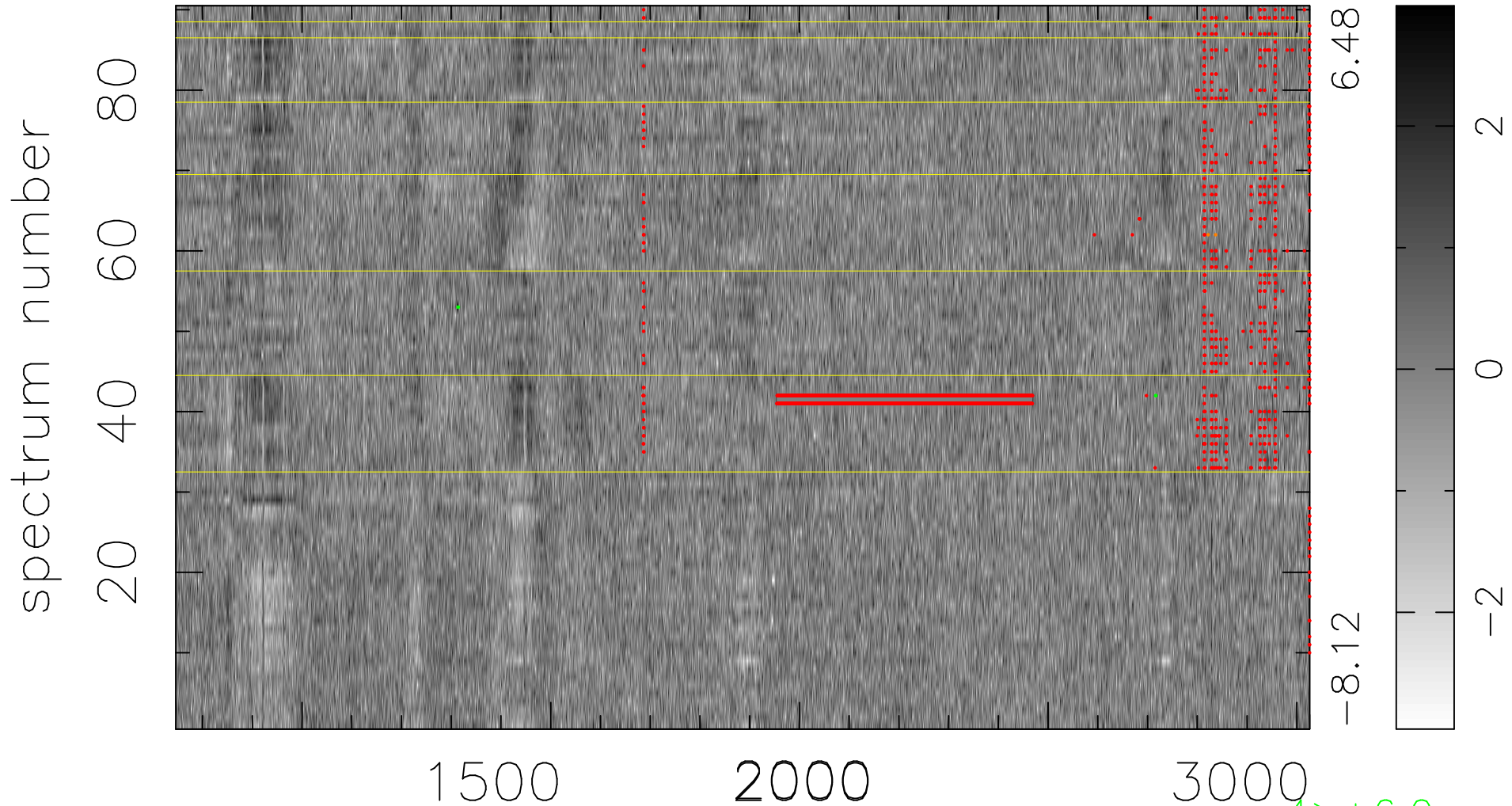


$$\chi(\lambda,t) = (\text{Data} - \text{Model } AC_5) / \sigma \chi$$

$$\chi^2 / (410400 - 5229) = 0.950 \Rightarrow 1.008$$

4560x90



bad:2746=0.67% λ (Å) $z = 2.22952$

4 > +6.0σ

2 < -6.0σ