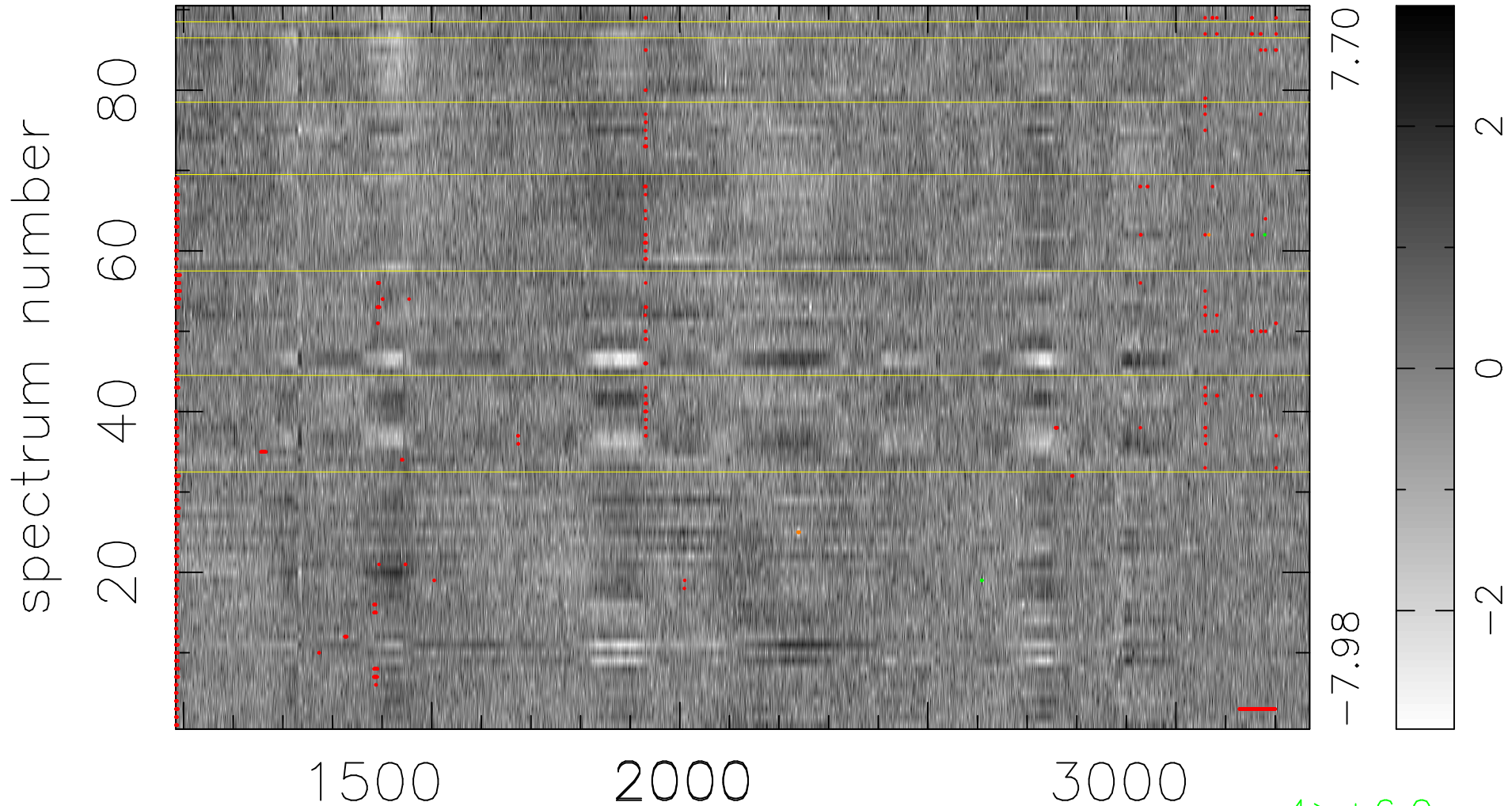


$$\chi(\lambda, t) = (\text{Data} - \text{Model AC}_5\text{F}) / \sigma \chi$$

$$\chi^2 / (411390 - 5142) = 1.101 \Rightarrow 1.009$$

4571 × 90



bad:970=0.24%

λ (Å) $z = 1.88560$

4 > +6.0σ

7 < -6.0σ