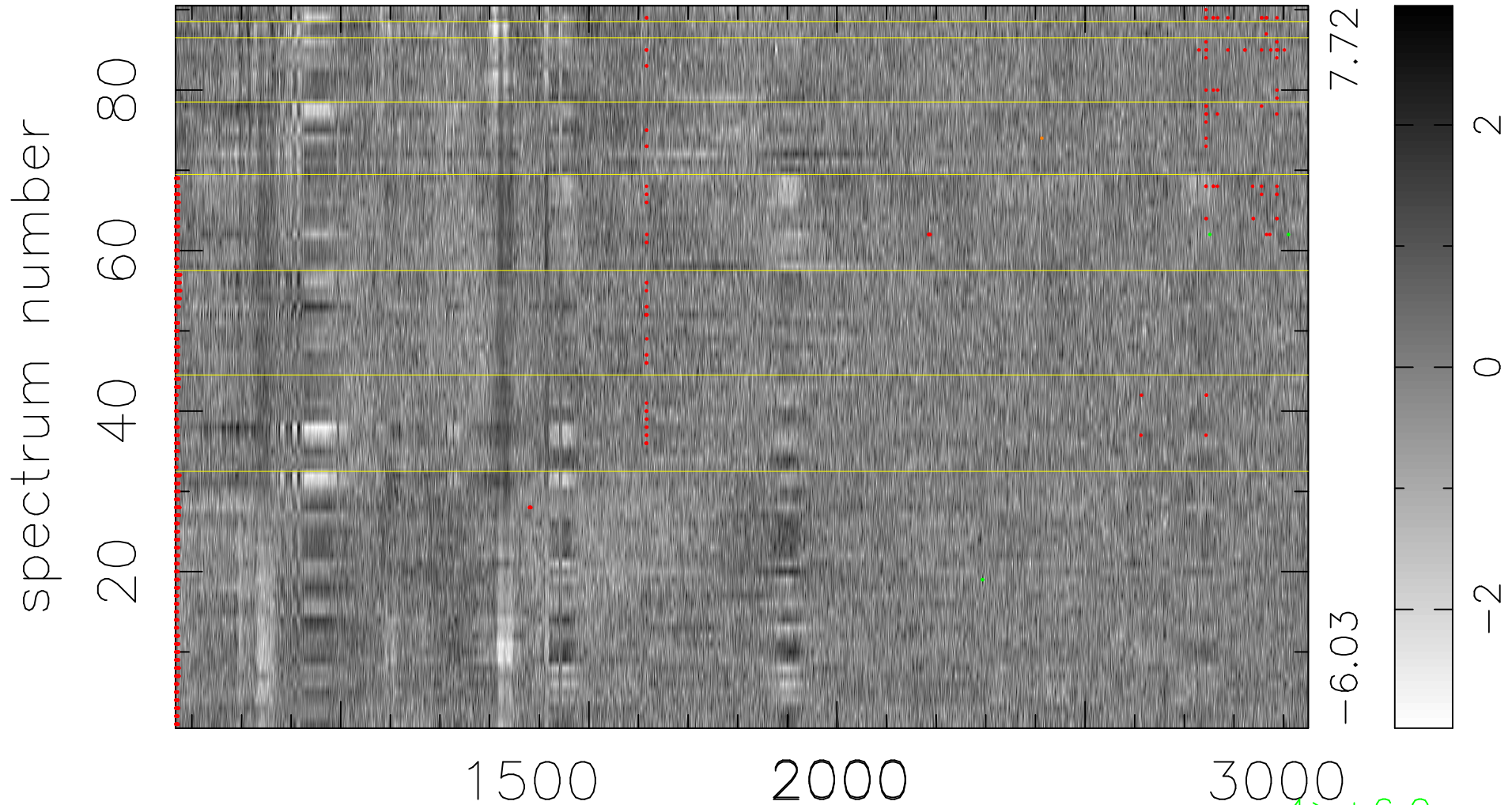


$$\chi(\lambda, t) = (\text{Data} - \text{Model } AC_5) / \sigma \chi$$

$$\chi^2 / (410940 - 5242) = 1.280 \Rightarrow 1.008$$

4566x90



bad:939=0.23%

λ (Å) $z = 2.33622$

4 > +6.0σ

1 < -6.0σ