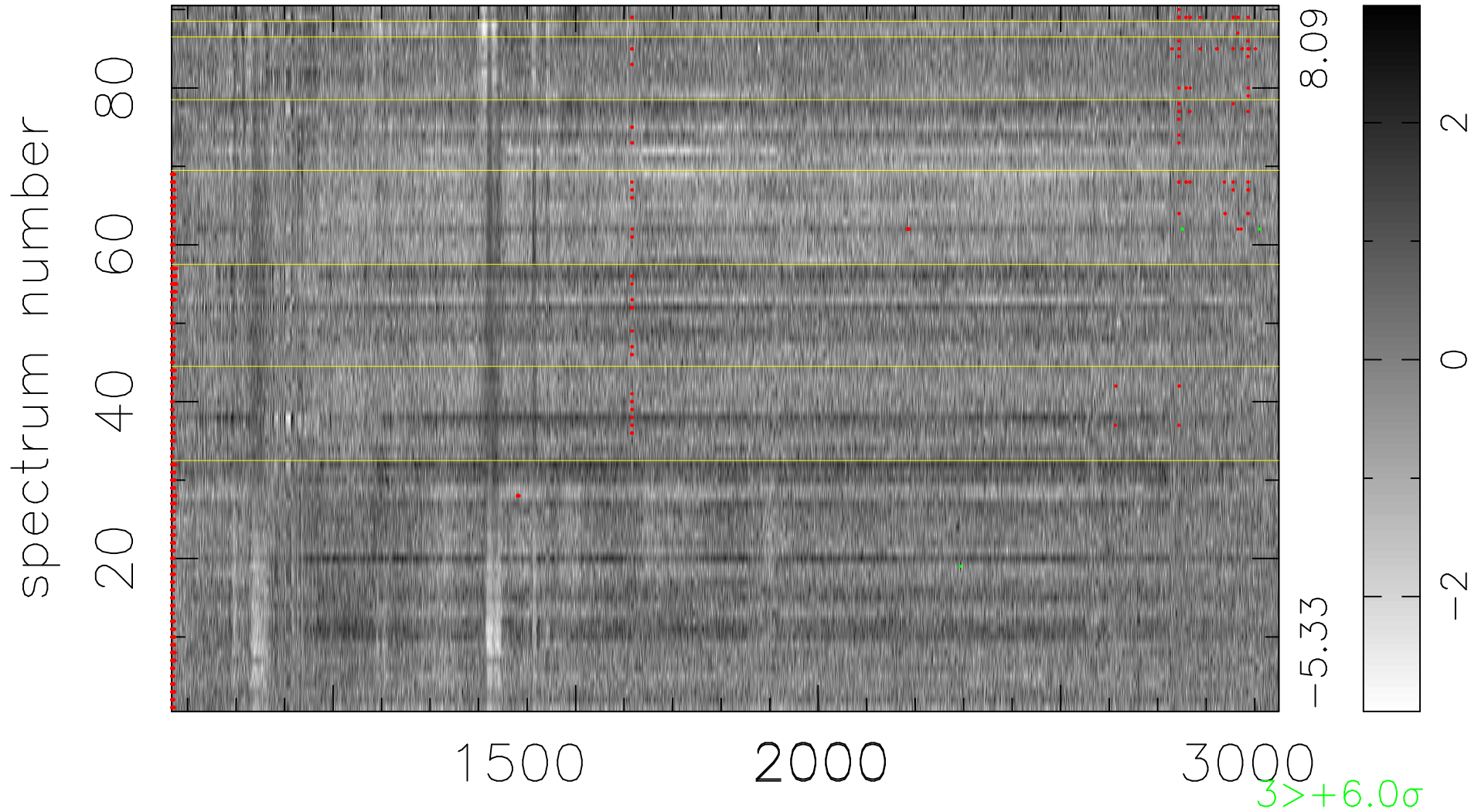


$$\chi(\lambda, t) = (\text{Data} - \text{Model } \text{AC}_5\text{B}_7\text{F}) / \sigma \chi$$

$$\chi^2 / (410940 - 5508) = 1.183 \Rightarrow 1.007$$

4566x90



bad:939=0.23%

λ (Å) $z = 2.33622$